

JK-W4-D

产品使用说明书&产品零件图册  
Manual book & parts book

**JACK 杰克**

# 目录/CONTENTS

使用说明	1
一、套筒部件(Bushing assemblies)	5
二、车壳部件 (Frame assemblies)	7
三、罩壳部件(Cover assemblies)	9
四、缝台部件(Cloth plate assemblies)	11
五、下轴部件(Hook shaft assemblies)	13
六、上轴部件(Main shaft assemblies)	15
七、针杆部件(Needle bar assemblies)	17
八、护针部件(Needle guard assemblies)	19
九、弯针部件(Looper assemblies)	21
十、牙架部件(Feed dog holder assemblies)	23
十一、差动部件(Differential assemblies)	26
十二、压脚部件(Presser form assemblies)	28
十三、喂针部件(Needle feeding assemblies)	31
十四、松线部件(Thread loosening assemblies)	33
十五、过线部件(Thread loosening assemblies)	35
十六、打线凸轮外移部件(Outside cam assemblies)	37
十七、润滑部件 (Lubrication assemblies)	39
十八、油泵部件(Oil pump assemblies)	41
十九、硅油盒装置部件 (Silicon oil device assemblies)	43
二十、线架部件(Thread apool assemblies)	45

二十一、油盘托板部件(Oil plate assemblies)	47
二十二、电控专用件(specific parts)	49
二十三、05专用部件(05 specific parts)	51
二十四、05专用部件(05 specific parts)	53
二十五、05专用部件(05 specific parts)	55
二十六、针位组部件(specific parts)	57
二十七、05、07专用部件(05、07 specific parts)	59
二十八、05专用部件(05specific parts)	61
二十九、23专用部件(23 specific parts)	63
三十、附件部件(Accessories assemblies)	65
注意事项/Notes for safe	67
W4-D-05步进电机控制器说明书	68
W4-D电控箱操作说明书	69

## ⚠ 安全须知

对于缝纫机本身各种装置，我们充分考虑到它的安全性。请遵照基本的操作方法，安全的进行工作。

- 拆除为保证安全所设置的装置，零件的情况下使用，是非常危险的，请绝对不要拆除后使用。
- 缝纫机在使用时，请不要在缝纫机台板上放置工具及缝纫时不必要的物品。
- 在对缝纫机进行检查、修理、清扫等维护作业时，请关掉电源开关，将电源插销从插座上拔下，并确认踩缝纫机踏板也不会转动之后，再进行操作。

## ⚠ OBSERVE THESE SAFETY PRECAUTIONS

Though We takes the utmost care to produce safe sewing machines and devices, operators should follow these basic safety rules.

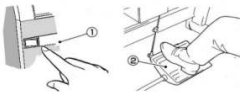
- To prevent accidents, do not remove safety devices or parts while operating the machine.
- Do not leave tools or other unnecessary objects on the machine table while operating the machine.
- Always turn off the power, unplug the machine and then make sure that the machine does not run by pressing the pedal before performing any maintenance, such as checking, repairing, cleaning, etc.

## 注意

使用离合式马达的情况下，在关掉电源①后因惯性作用会继续旋转。这时如不注意踩动缝纫机踏板②时，缝纫机会突然动作，这是很危险的。请在关掉电源后，仍继续踩动踏板②，直至缝纫机完全停下来为止。

## Caution

A clutch motor keeps on running for a while by inertia after turning off the power① suddenly. If the machine pedal② is stepped on inadvertently, it is dangerous as the machine will start running unexpectedly. Keeping on stepping on the pedal② until the machine comes to a stop after turning off power suddenly.



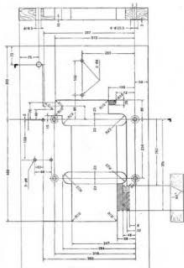
- 在离开缝纫机台时，务必请关掉电源。
- 停电时也请务必关掉电源。
- 为了总是安全地，运转良好的使用缝纫机，日常的点检是不可缺少的，请予以注意。
- Turn off the power before leaving the machine table.
- In the event of a power failure, be sure to turn off the power.
- Check that the machine is securely grounded.

## 台板加工图

### Schematic diagram to the machine table

请参照下图进行台板的加工

Cut the referring the diagram



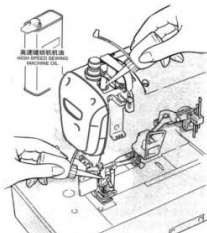
## 手动给油 Manual lubrication

手动给油是在缝纫机最初开始使用时，或相当一段时间重新开始使用时，请供给2~3滴油。

机油请使用本公司指定的（HIGH SPEED SEWING MACHINE OIL）(ISO粘度与VG22相同)。

Supply 2 or 3 drops of oil by hand when the machine is used for the first time or has been left unused for some time.

Note: Use [HIGH SPEED SEWING MACHINE OIL] recommended por (ISO VG22)





## 供油

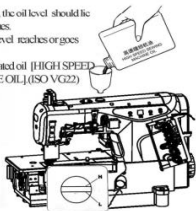
加油量要使油面处于H线与L线之间为好。当油面低于L线时,就要及时补充机油。机油请使用杰克公司指定的[HIGH SPEED SEWING MACHINE OIL] (ISO粘度与VG22相同)。

### Lubrication

After filling the oil pan, the oil level should lie between (H) and (L) lines.

Add oil when the oil level reaches or goes below (L) line.

Note: Use Jack designated oil [HIGH SPEED SEWING MACHINE OIL] (ISO VG22)



## 给HR装置供油

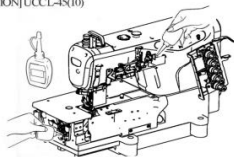
为了防止布纤维或线被切断,请尽早给HR装置供油。

注:硅油请使用本公司指定的冷却油。[请使用日本UNION CARBIDE(株)的UCCL-4S(10)]

### Filling the HR device with silicon oil

Fill the device with oil before it is too low in order to prevent needle thread breakage and fabric damage.

Note: Use recommended silicon oil [UNION CARBIDE CORPORATION] UCCL-4S(10)



## 穿线的方法

- (1) 请掀起护眼板, 打开机盖 (3处)。
- (2) 抬起弯针挑线架。
- (3) 把机上原有的线与缝线用线绑结在一起。
- (4) 按下弯针挑线架, 弯针挑线架回到原位。
- (5) 针线 将针线拉到针眼前, 剪掉结头再次穿好针线。
- (6) 弯针线, 上装饰线直到拉出接头后来后, 用剪刀剪齐接头, 整齐。

### Threading

- (1) Open the eye guard and three covers.
- (2) Take up the bracket.

(3) Knot the preset thread and the thread being used together to thread the machine.

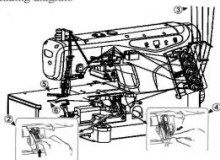
(4) Press down the bracket after threading. The looper thread take-up comes back.

(5) Needle tread Trim the knots off neatly before passing through the eye of the needle to thread.

(6) Looper thread, Top cover thread Trim the knots off neatly after passing through the eye of the looper.

若机上原来没有线, 请参照穿线图正确进行穿线。

Be sure to thread the machine correctly by referring to the threading diagram.

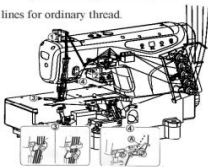


## 穿线图 (2针, 3针用) Threading diagram

- ① 若使用伸缩大的线时, 为点线A的方向。(通常为实线方向)  
Broken lines(A) For more stretchable thread.
- ② 装饰线太松弛时用B, 用3份松弛时用C, 装饰线太紧时用D  
If the top cover thread is too loose, use broken line(B). If the top cover thread is still too loose after thread with broken line(B), use broken(C). If the top cover thread is too tight, use broken line(D).
- ③ 穿伸缩大的线时 穿伸缩小的线时  
For more stretchable thread For less stretchable thread
- ④ 穿伸缩大的线时用点线E方向  
Broken lines(E) For more stretchable thread
- ⑤ 若使用伸缩大的线时, 为点线F方向。(通常为实线方向)  
Broken lines(F) For more stretchable thread.



## Solid lines for ordinary thread.

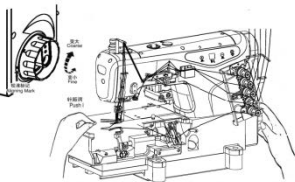
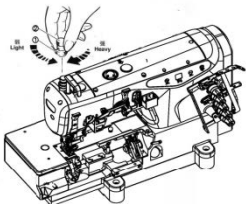


## 压脚压力调节

压脚压力的调节是松开螺母①和旋转螺丝②来进行的。在能获得平稳针脚的范围内，尽量调得松一些为好。

### Adjusting the presser foot pressure

Loosen adjusting (1) nut and turn adjusting screw(2) to adjust the presser foot pressure. It should be as light as possible, yet be sufficient to obtain the proper stitch for formation.



## 线状态的调节

线状态的调节是用针线状态旋钮①，上装饰线状态旋钮②，下针状态旋钮③来进行调节。

### Thread tension

Make tension adjustments with the needle thread knob(1),top cover thread knob(2),and looper thread knob(3).

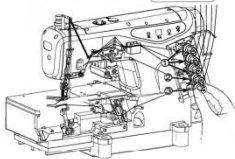
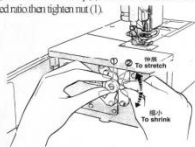


## 差动比的调节

差动比是通过松开螺母①后，把调节杆②上下移动来进行调节的，调节后请拧紧螺母①。

### Adjusting the diff. feed ratio

Loosen nut(1)and move the lever up(2) and down to obtain the correct differential feed ratio then tighten nut (1).



## 缝纫机的清扫

缝纫机的清扫，以针板槽及送布牙周围为主。

### Cleaning the machine

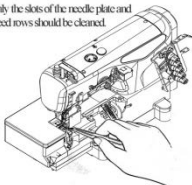
Mainly the slots of the needle plate and the feed rows should be cleaned.

## 针脚长度的调节

握住针距调节按钮，旋转手轮，针距调节按钮会陷进更深处。这时边握住针距调节按钮，边转动手轮，使校准标记对准所希望的数值。针脚长度调节。注：针脚长度的调节务必在调节差动比之后进行。

### Adjusting the stitch length

While pressing the push button,turn the handwheel to seek the position at which the push button goes further into the depth Then keeping the button pressed,turn the handwheel and set the desired scale to the aligning mark. Note:Stitch length adjustment must only be made after the differential feed ratio has been changed.



## 换针

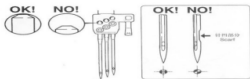
1. 准确辨认针的前后，请将针凹向着后方，即背向操作者进行安装。

2. 针要牢固的插到孔的最深处。

### Replacing the needle

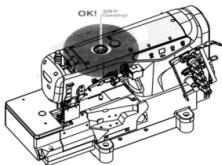
1. Check the needle carefully to see that the scarf is turned to the rear of the machine.

2. Insert the needle to the proper depth, and fasten securely.



## 检查机油的循环

### Cleaning the oil circulation



## 油过滤器的检点与更换

- 机油过滤器，请于每6个月来点检或更换一次。
- 检点和更换每隔6个月进行一次！

### Cleaning and replace the oil filter

- Check and replace the oil filter every six months.
- Check and replace every 6 months !

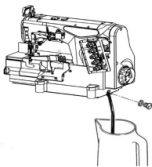


## 换机油

机油的更换，请在使用开始一个月后更换一次。然后，每6个月更换一次。

### Replacing the oil

Replace the oil one month after the first use and every six months thereafter.



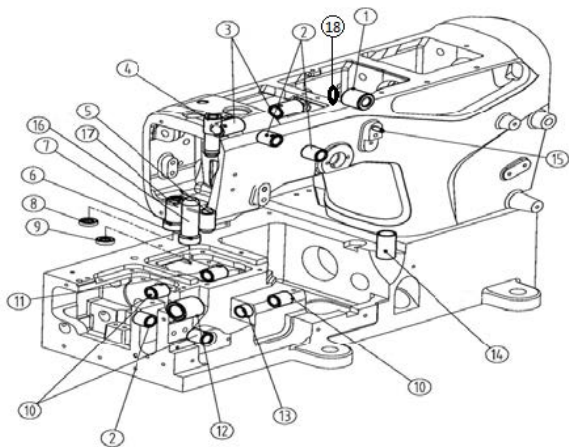
JACK高速带缝机相关技术参数

#### 高行程数据

机型	× □□□								针杆行程
W4-01GB/02BB/06CB	356	9.7	3-3.2	9.8	5-5.3	17	6.2	0.8-1.2	33.4
	364	9.3	2.6-2.8	9.4	5-5.3	17	6.2	0.8-1.2	33.4
W4-23BB	356	9.7	3-3.2	9.8	5-5.3	17	6.2	0.8-1.2	33.4
W4-23GB(L)	256	9.7	3-3.2	9.8	5-5.3	17	6.2	0.8-1.2	33.4

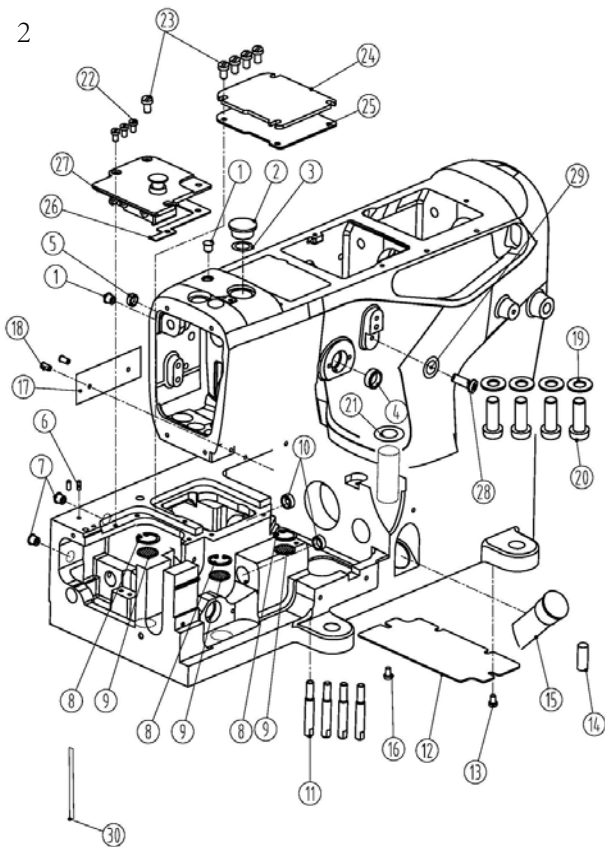
#### 标准行程数据

机型	× □□□								针杆行程
W4-01GB/02BB/06CB	356	8.5	3.2-3.5	8.5	5-5.3	17	6.2	0.8-1.0	30.8
	364	8.1	2.8-3.1	8.5	5-5.3	17	6.2	0.8-1.2	30.8
W4-23BB	356	8.1	2.8-3.1	8.5	5-5.3	17	6.2	0.8-1.0	30.8
W4-23GB(L)	256	8.1	2.8-3.1	8.5	5-5.3	17	6.2	0.8-1.2	30.8



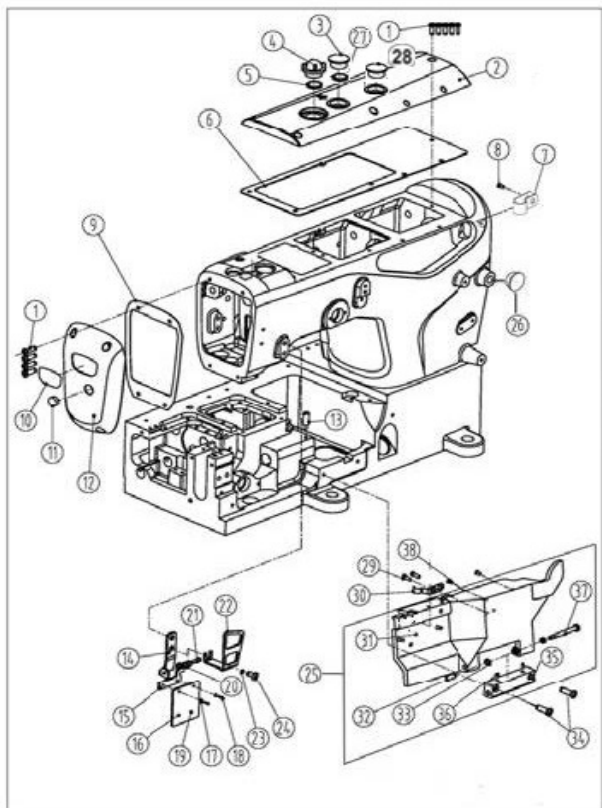
## 1、套筒部件(Bushing assembli

序号Ref.No	公司件号	Part No	参考件号 Ref. Part. no	名称	Description	数量 Number
1	131103007			抬压轴套筒	sleeve	1
2	131103006		210297	过线座轴套筒	sleeve	2
3	20103020		250141	送布轴套	sleeve	2
4	30103017		250146	针杆上套	sleeve	1
5	30103062		251003	针杆下套	sleeve	1
6	30103035		250147	压脚轴套筒	sleeve	1
7	30103038		250136	喂针摆动轴套筒	sleeve	1
8	20622019			油封	plug	1
9	30122039			油封	plug	1
10	20103014			前弯针轴后套筒	bushing	3
11	30103106		250135	弯针轴前后套筒	plug	1
12	30103010			主轴套筒	bushing	1
13	30103019			护针轴前套筒	bushing	1
14	(30221016)		255020	铜油管	pipe	1
15	P03005			销 4×8	pin	1
16	001006			O型圈8.5x1.8		1
17	001008			O型圈9x1.8		1
18	20122029			油封		1



## 2、车壳部件 (Frame assemblies)

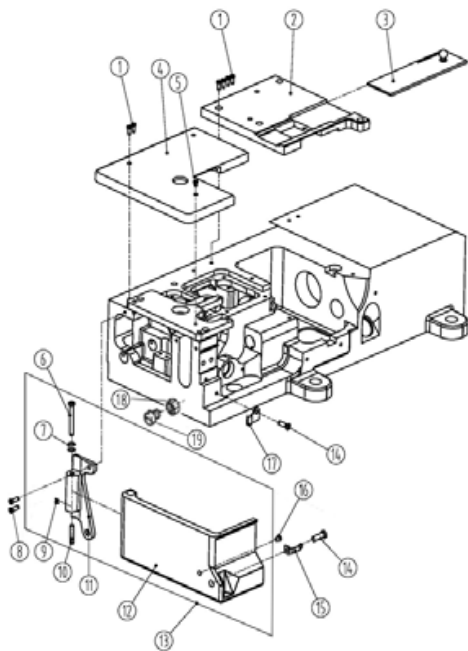
序号 Ref. No	公司件号 Part No	参考件号 Ref. Part. no	名称	Description	数量 Number
1	30122006	240052	油封	plug	3
2	21022007	206590	油封	plug	1
3	21012018		油封垫	washer	1
4	20622019		油封	plug	2
5	30122008		油封	plug	1
6	F01001		销A5×13	pin	2
7	30122006	240052	油堵	plug	4
8	H01001	240001	挡圈	ring	3
9	30112001	255002	滤油网	filter	3
10	30122008	208173	油封	plug	2
11	301s30001	250117	机壳螺钉	shoulder pin	4
12	30112002	250049	盖板	cover	1
13	s01002	7017	螺钉M4X6.5	screw	1
14	10126021		拼装销	pin	2
15	30111001	206590	油标	oil level gauge	1
16	s01002	7017	螺钉M4X6.5	screw	1
17	30137001	250233	机型牌	sticker	1
18	R03001	210679	铆钉 2.5×4	pin	2
19	W02003		垫圈 10	washer	4
20	S05001		螺钉 M10×27.5	screw	4
21	001001		O型圈 15×2.65	o ring	1
22	301s11024		滑块导座螺钉	screw	3
23	L02001	7084	螺钉 M4×8	screw	5
24	30101005	250003	下节右盖	top cover (right)	1
25	30122003	250004	下节右盖垫	gasket	1
26	30122002	250020	下节左盖垫	gasket	1
27	30101004	250069	下节左盖	top cover plate (left)	1
	(30101162) 23机型		下节左盖 (23机型)		1
28	207S11007		GB/T65-1985螺钉 M4×7.8		1
29	W01001		GB/T 97.1-2002 M4垫片		1
30	30123028		JK-8569-0435油棉		1





## 3、罩壳部件(Cover assemblies)

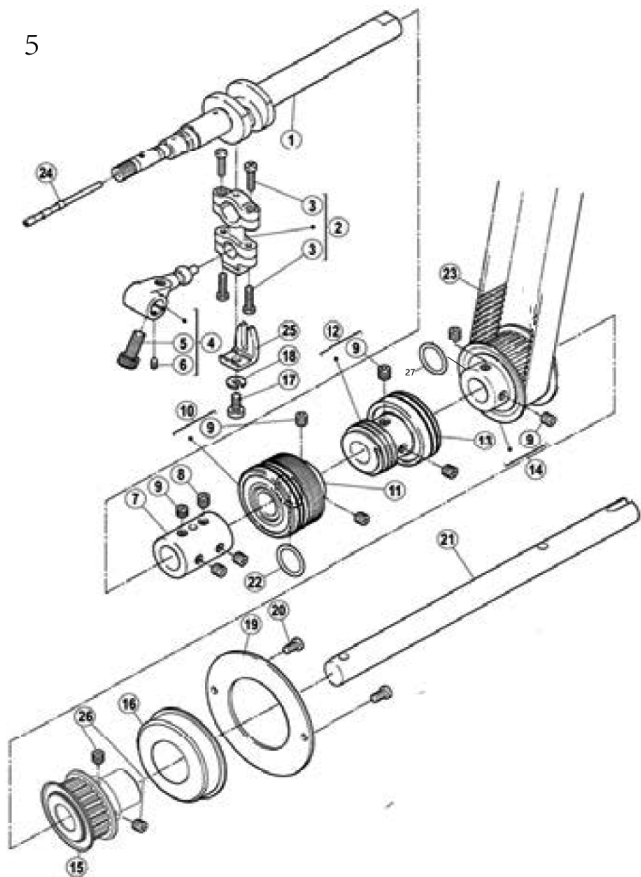
序号Ref. No	公司件号	Part No	零件号 Ref. Part No	名称	Description	数量 Number
1	s04060		7021	螺钉M4×10	screw	9
2	31001003			上盖(喷漆)	arm cover(top)	1
3	20722002			油封	plug	1
4	20711035			油窗	Oil Sight Window	1
5	21022003			油窗垫	o ring	1
6	31022010			上盖密封垫	The head gasket	1
7	20711212			R型线夹s.6		1
8	S01002			螺钉 M4×6.5		1
9	S1122001			机头左盖密封垫	o ring	1
10	13837002			商标牌	plug	1
11	10122003			油封	plug	1
12	303795			机头左盖(喷漆)	arm cover(rear)	1
13	301S30002		7089	左侧盖簧螺钉	screw	1
14	31012042			玻璃罩安装板	glass plate	1
15	31012029			护罩架	shield	1
16	30111003		250257	有机玻璃罩	eye guard	1
17	W01002		202875	垫圈	sticker	2
18	s01006		7009	螺钉M3x4.5	screw	2
19	20131063			护罩警示牌	sticker	1
20	W03001		210307	波形垫圈	washer	2
21	301S20001			螺钉	screw	1
22	31012012			过线护罩	threan takeup cover	1
23	W02004		303335	垫圈6	sticker	1
24	s01060		7052	护罩螺钉	screw	2
25	300951			前门板缝台	screw	1
26	30122015			油封	cushion	1
27	21012018			油封垫		1
28	30122012			前罩防尘垫		2
29	s01002		7017	螺钉M4x6.5	screw	2
30	30127001		250051	前罩簧	flat spring	1
31	30101110			JK-8568A-W2-38前门板	arm cover	1
32	(301s20003)		250014	前罩缝台螺钉	pin	1
33	(30128002)		201191	弹簧垫圈	spring	3
34	s01007		7023	螺钉M4x13.5	screw	2
35	(30101063)			前罩缝台座	bracket	1
36	(s10006)		4539	螺钉M5x6	screw	2
37	(301s20002)		250013	前罩缝台座螺钉	screw	1
38	30122015			前罩防震垫	screw	1



## 4、缝台部件 (Cloth plate assemblies)

序号 Ref.No	公司件号 Part No	参考件号 Part. no	Ref.	名称	Description	数量 Number
1	207s11008	7021		螺钉 M4×12	screw	6
2	300137	250074-ASD		右缝台盖 (喷漆)	bed cover(right)	1
3	30115001	250071-91		推板	cover	1
4	300953	250052-BSD		左缝台盖 (喷漆)	bed cover(left)	1
5	s02001	7043		螺钉 M4×6	screw	1
6	(301s20004			侧盖合扇销钉	screw	1
7	(30128002)	201191		弹簧垫圈	spring	2
8	s01005	7020		螺钉 M4×10	screw	2
9	(s10001)			螺钉M3X4	screw	2
10	(301s20005			销螺钉	pin	1
11	(30101112)			侧盖合扇	cover	1
12	(30101111)			侧盖	side cover	1
13	300952			侧盖组件 (喷漆)	side coverassy	1
14	s01001			螺钉M4X7	screw	2
15	31127001			侧前锁紧簧	flat spring	1
16	30122015			前罩防震垫cushion	cushion	1
17	30112095			侧前锁紧舌	flat spring	1
18	S01005			螺钉		1
19	N01001			螺母M4		1

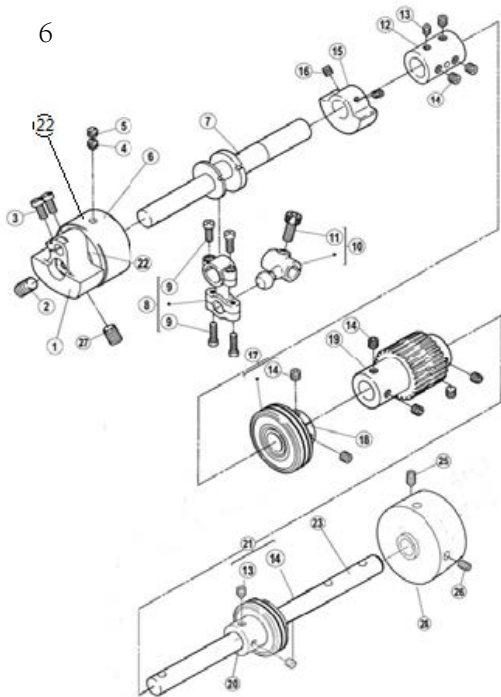
5



## 5、下轴部件(Hook shaft assemblies)

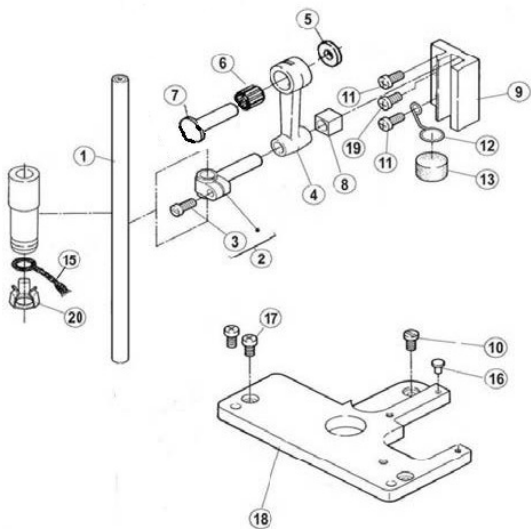
序号 Ref.No	公司件号 Part No	参考件号 Ref. Part. no	名称	Description	数量 Number
1	400068	250501B-91	下轴	crankshaft assy	1
2	400060	2505009-92	连杆组件	connection assy	1
3	(201520015	7015	螺钉 M3.5×13	screw	4
4	30104002	252008	下轴曲柄	crank	1
5	S05002	4534	螺钉 M6×0.75×15.2	screw	1
6	S12002	4545	螺钉 M3×4	screw	1
7	30103004	250506	接轴套	joint	1
8	S12003	4555	螺钉 M6×7	screw	2
9	S10029	4547	螺钉 M6×0.75×5	screw	8
10	3012400300	250508-91	油封轴承	bearing	1
11	30103006	250508	中轴套	bushing	1
12	30103008	250543	蜗杆	bushing	1
13	3012400400		油封轴承	bearing	1
14	3112500100	250511-1	下轴同步带轮	gear (lower)	1
15	30125005	250530	小同步带轮2	small gear2	1
16	B01003	250504-91	轴承 6304Z	bearing	1
17	301S11004	4019	比叉螺钉	screw	1
18	W02001	202286	M5 弹垫	washer	1
19	30108001	250514	轴承挡圈	cover	1
20	207S11007	7019	螺钉 M4×7.8	screw	2
21	31102001	250507	下后轴	shaft	1
22	001001	206837	O型圈 15×2.65	o ring	1
23	30135021	206050C	同步带	timing belt	1
24	30126001	250525	调节销	adjusting bar	1
25	30109001	201074	比叉	guide	1
26	s12005		螺钉M4×4		3
27	131203001		防松套		1

6



## 6、上轴部件(Main shaft assemblies)

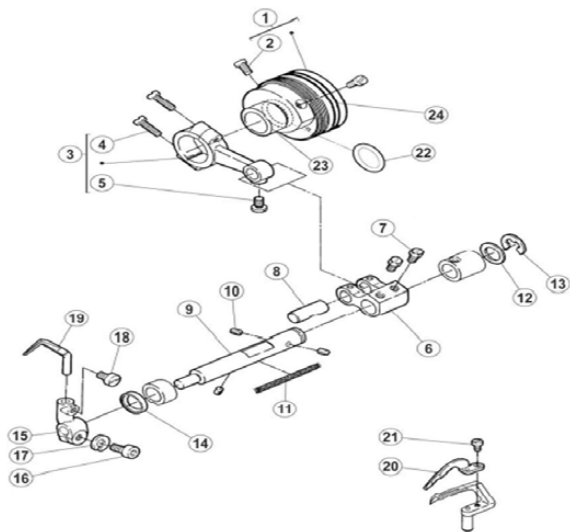
序号 Ref.No	公司件号 Part No	参考件号 Part. no	Ref.	名称	Description	数量 Number
1	S1104002	250526B92		针杆曲柄	motion assy	1
2	S10004	4592		螺钉 M8×1×12	screw	1
3	S01011	7028		螺钉 M5×10	screw	2
4	S08001			螺钉 M6×0.75×3.5		1
5	S11001	7152		螺钉 M6×0.75×6	screw	2
6	B01005			轴承	bushing	1
7	400065	250517A		曲柄轴承上前轴	crankshaft	1
8	400061	253500-92		连杆组件	connection assy	1
9	(201S20015	7021		铜连杆螺丝	screw	4
10	30104006	253501A		弯针曲柄	crank assy	1
11	S05002	4534		螺钉 M6×0.75×15.2	screw	1
12	30103004	250506		接轴套	joint	1
13	S12003	4555		螺钉 M6×0.75×7	screw	3
14	S10029	4547		螺钉 M6×0.75×5	screw	9
15	30109003	250524		上轴平衡块	balance weight	1
16	S10002	4514		螺钉 M5×5	screw	2
17	3012400400	250529-91		油封轴承	bushing	1
18	30103107	250529		轴承套(短)(粉末冶金)上	bushing	1
19	30125002	250521		轴同步带轮	gear (upper)	1
20	30103108	250528		轴承套(长)(粉末冶金)油	bushing	1
21	3012400400	250529-91		油封轴承	bearing	1
22	30103015			轴承套		1
23	30202004			后轴	shaft	1
24	S1035002			手轮	pulley	1
25	S12001	4556		尖端紧定螺钉 M6×8	screw	1
26	S10009	4541		螺钉 M6×8	screw	1
27	301S10004			针杆曲柄螺钉		1





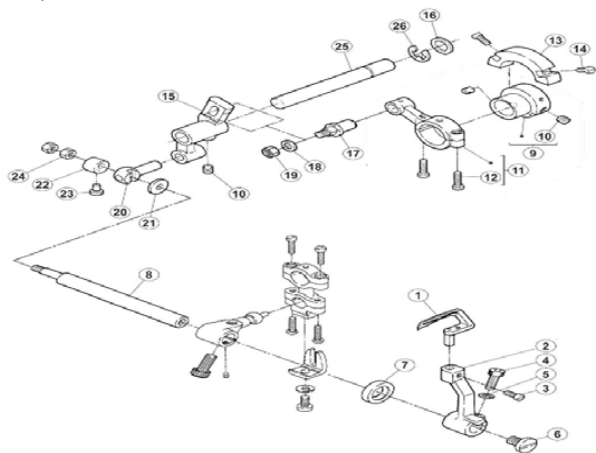
## 7、针杆部件(Needle bar assemblies)

序号Ref.No	公司件号 Part No	参考件号 Ref. Part. no	名称	Description	数量 Number
1	30102008	251000-91	针杆	needle bar	1
2	30102009	206061	针杆轧头	needle bar pin	1
3	301S11005	5325	针杆轧头螺钉	screw	1
4	30105005	206052	针杆连杆	link/needle bar	1
5	30128006		轴垫	washer	1
6	B07001	240098	轴承 8×12×12	needle bearing	1
7	30102010	251010A	连杆轴	eccentric pin	1
8	30109004	206063	针杆滑块	block	1
9	30109005	206062	滑块导座	guide block/needle	1
10	s01002	7082	螺钉 M4×6.5	screw	1
11	207s11008	7021	螺钉 M4×12	screw	2
12	30127003	251009	毛毡弹簧	spring	1
13	30123002	179040-05	毛毡	felt	1
15	30123014	202176	油线	oil wick	1
16	30122018	240123	防振垫	cushion rubber	1
17	207S11007	7019	螺钉 M4×7.8	screw	2
18	30109006	251007	针板座	bracket	1
19	207S11007	7019	螺钉 M4×7.8	screw	1
20	30112009	206524	油线托	oil wick retainer	1



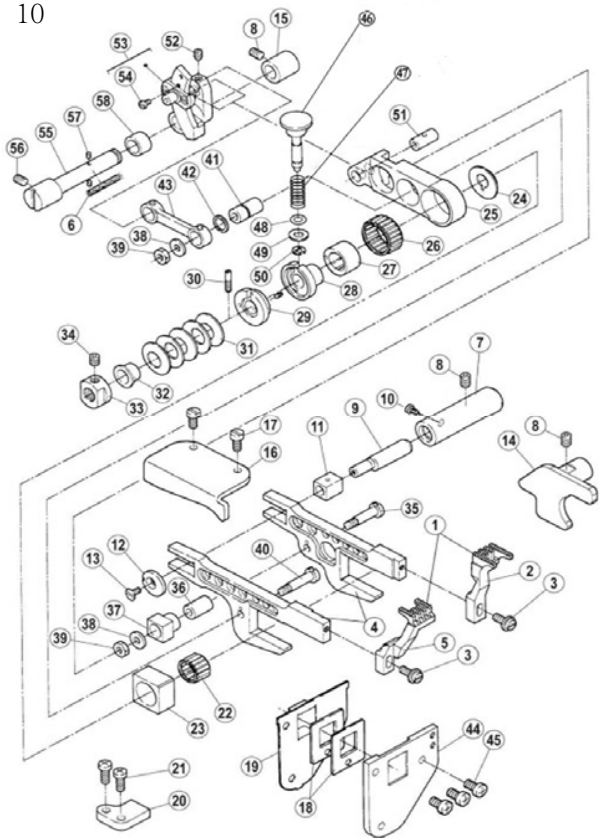
## 8、护针部件(Needle guard assemblies)

序号Ref.No	公司件号 Part No	参考件号 Ref. Part. no	名称	Description	数量 Number
1	B01001		轴承 6004Z	bearing	1
(2)	S10028	4539	螺钉 M5×6	screw	2
3	400062	255501-92	连杆组件	connection assy	1
(4)	S01039	7015	螺钉 M4×15	screw	2
5	301S11024	7082	滑块导座螺钉	screw	1
6	30104007	306093	弯针曲柄	crank	1
7	301S12001	5084	曲柄螺钉	screw	2
8	30126003	205495	曲柄销	pin	1
9	30102011	251518	护针轴	shaft	1
(10)	30123001	206748	毛毡	felt	3
(11)	30123014	202176	油线	oil wick	1
12	30128008	240102	护针轴垫圈	washer	1
13	H05001	205061	挡圈 10	ring	1
14	30122019	204052A	油封	oil seal	1
15	30104009	251519	护针挡架	lever assy	1
16	S05003	4500	螺钉M5×10	screw	1
17	W02001	303067	M5 弹垫	washer	1
18	S01002	7017	螺钉 M4×6.5	screw	1
19	30117002	257551B	后护针挡	needle guard (rear)	1
(20)	30117003	257553	前护针挡	needle guard (front)	1
21	S01012	7031	螺钉 M2.5×4	screw	1
22	001001		O型圈15×2.65	oring	1
23	30110002	251517	偏心凸轮	eccentric	1
24	30122017		油承槽油封	oil seal	2



## 9、弯针部件(Looper assemblies)序

号Ref.No	公司件号	Part No	参考件号 Ref. Part. no	名称	Description	数量 Number
1	3011700900		257550-91	弯针组	looper	1
2	30104012		252007	弯针架	looper holder assy	1
3	301S20038		7019	JK-8569A-W8-30圆柱头凹端螺钉M4×7	screw	1
4	S05004		4501	螺钉 M5×14	screw	1
5	W02001		303067	M5 弹垫	spring washer	1
6	S01014		7085	螺钉 M6×0.75×9.6	screw	1
7	20622019			油封	oil seal	1
8	30102014		252006	弯针架轴	shaft	1
9	30110005		252000	摆架偏心轮	eccentric assy	1
10	S10006		4539	螺钉 M5×6	screw	1
11	400063		252001-92	连杆组件	connection assy	1
12	(S01039)		7015	螺钉 M4×15	screw	2
13	31109001		252010	平衡块	balance weight	1
14	S01009		7011	螺钉 M3×7.5	screw	2
15	30104010		252002	弯针摆动架	crank	1
16	30128008		240102	摆架轴垫圈	washer	1
17	30102013		179399-05	连杆轴	pin	1
18	30128032		240062	垫片	washer	1
19	N01004		4805	螺母 M5	nut	1
20	30102015		252003	摆轴轧头	block pin	1
21	30128010		208028	垫圈	washer	1
22	30108002		208029	偏心挡圈	collar	1
23	301S12001		5084	曲柄螺钉	screw	1
24	N01001		4802	螺母 M4	nut	2
25	30102012		252004	摆架轴	shaft	1
26	H05001		205061	挡圈 10	ring	1

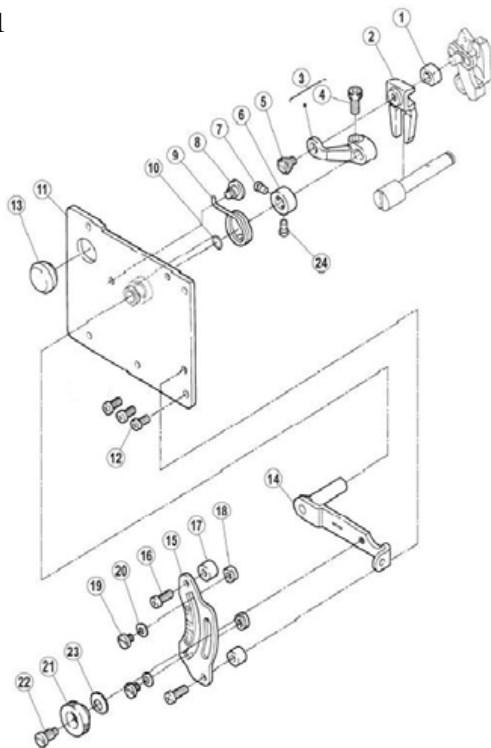


## 10、牙架部件(Feed dog holder assemblies)

序号 Ref. No	公司件号 Part No	参考件号 Ref. Part. no	名称	Description	数量 Number
1	3011400700	257259-16F	差动送布牙组件	main feed dog assembly	1
	3011400200	23GBL专用件			
	3011400300	23BBL专用件			
2	30114001		356、364送布牙	main feed dog	1
3	301S30003	5590	差动送布牙螺钉	screw	2
4	400066	252500-91	差动送布牙架组件	main feed bar assembly	1
5	30114002		356、364差动牙	differential feed dog	1
6	20123021	202175	油线	oil wick	1
7	30103022	204129A	套筒	bushing	1
8	S10006	4539	螺钉 M5×6	screw	3
9	30102016	204128A	偏心轴	eccentric pin	1
10	301S12001	5084	曲柄螺钉	screw	1
11	30109008	205857	滑块	block/feed bar guide	1
12	30128011	204439A	偏心垫	washer	1
13	301S17002	5317	偏心轴螺钉	screw	1
14	30109009	252504	牙架挡板	guide(right)	1
15	30103031	206571	差动轴后套筒	bushing	1
16	30109010	252507	左挡板	guide(left)	1
	30109025	23机型			
17	L02003	7019	螺栓 M4×7	screw	2
18	30122020	206133	牙架油封	oilshield	2
19	30109011	252509	油封挡板	cover	1
20	30109012	252508	挡板	guide(lower)	1
	30109026	23机型			
21	S01005	7020	螺钉 M4×10	screw	2
22	B07002	206128	轴承 12×15×10	needle bearing	1
23	30109013	252519	抬牙滑块	block	1
24	30108003	252520	轴承挡圈	washer	1
25	30104013	206562	差动送布架	link/main feed	1
	30104049	23机型			
26	B07003	206125	轴承 17×21×10	needle bearing	1
	B07043	23机型			
27	30103023	252521	偏心轴承套	eccentric	1
	(30103087)	23机型			
28	30103024	252522	送布调节器	regulator	1
	(3010308900)	23机型			
29	3010306500	252523-91	调节器套组	eccentric retainer	1
	(30103024)	23机型			
30	301S30004	252516	调节器螺钉	screw	1
31	30128012	240125	碟形垫圈	spring	5
32	30103026	252525	垫圈套	spacer	1
33	301S16001	252543	调节螺母	nut	1
34	S10002	4514	螺钉 M5×5	screw	1
35	301S30005	206120	牙架螺钉	screw	1
36	30103027	206119	差动牙架套	bushing	1
37	30109014	206563	送布滑块	guide block	1
38	30128013	200098	垫片	washer	2
39	201S16003		N03 螺母	nut	2
40	301S30006	206123	差动牙架螺钉	screw	1

41	30103028	206566	差动连杆套	bushing	1
42	30129001	206565	开口挡圈	ring	1
43	30105010	206564	差动送布连杆	link/differential feed	1
44	30109015	251520	牙架挡板	bracket	1
45	207S11007	7019	螺钉 M4×7.8	screw	3
46	30102017	252526	针距调节按钮	pin	1
	(30126016)23机型				
47	30127004	240122	针距调节簧	spring	1
	(30127026)				
48	001004	206366	O型圈 4×1.8	o ring	1
49	30128032	204585	垫圈	washer	1
	(12928008)23机型				
50	H05002	200555	挡圈 3	ring	1
51	30103029	206569	差动送布架套	pin	1
52	S12005	4546	螺钉 M4×4	screw	1
53	3010401500	252527-91	差动调整架组件	crank	1
54	(S01012)	7031	螺钉 M2.5×4	screw	1
55	30102018	252510	差动轴	shaft	1
56	S10002	4514	螺钉 M5×5	screw	1
57	(30123008)	207925	喂针轴油孔毛毡	felt	2
58	30103030	240119	差动轴前套筒	spacer	1

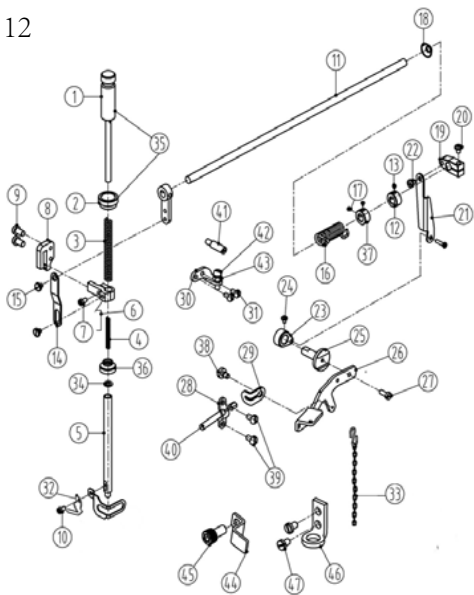




## 11、差动部件(Differential assemblies)

序号 Ref.No	公司件号 Part No	参考件号 Ref. Part. no	名称	Description	数量 Number
1	30103032	252531	方套	block	1
2	30109016	252532	比叉	guide/block	1
3	30105012	252533	连杆	lever	1
4	207s13009	4631	螺钉 M5×12	screw	1
5	301S20006	5316	连杆连接螺钉	screw	1
6	30108004	240271	挡圈	ring	1
7	125s11003	35827	挡圈螺钉	screw	1
8	301S20001	7066	护罩座固定螺钉	screw	1
9	30127005	252536	弹簧	spring	1
10	001005	240129	O型圈 7.5×1.8	o ring	1
11	3011201100	252539A91	左板组件	bracket	1
12	207S11007	7019	螺钉 M4×7.8	screw	3
13	30122021	240162	油封堵	plug	1
14	3011201300	252664-91	调节扳手组件	lever assy	1
15	30112015	252538	调节板	scale plate	1
	30112220	23机型	调节板		
16	207s11008	7021	螺钉 M4×12	screw	2
17	31103003	240124	调节套	spacer	2
18	20109005	210171	调节滑块	stopper	2
19	301S11008	2905	螺钉	screw	2
20	W01006	201185	垫圈 4	washer	2
21	301S16004	210167	螺母	nut	1
22	301S30007	5486	调节扳手螺钉	screw	1
23	30128014	211301	垫圈	washer	1
24	301S11023		挡圈螺钉(短)	screw	1

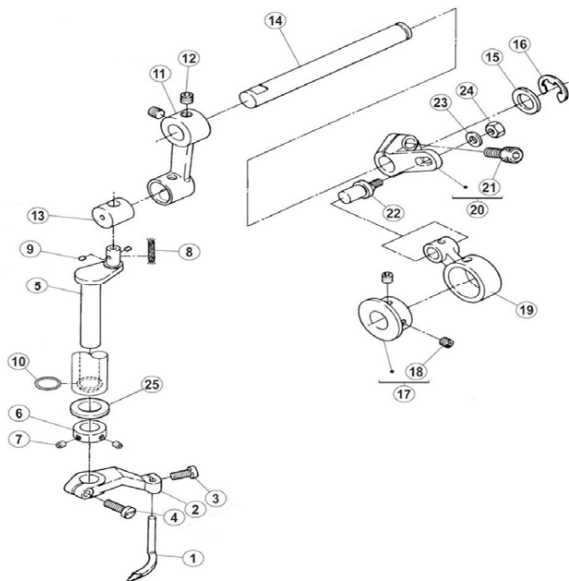
12



## 12、压脚部件(Presser form assemblies)

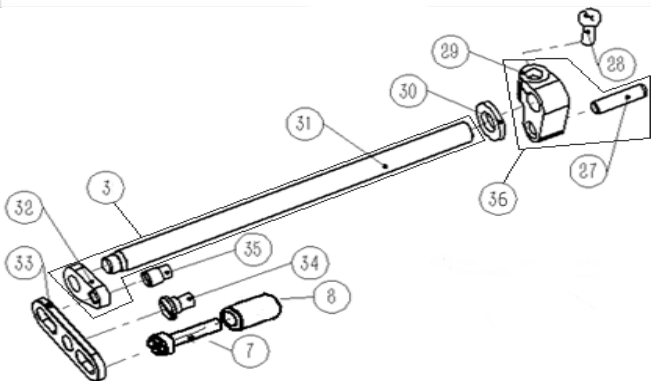
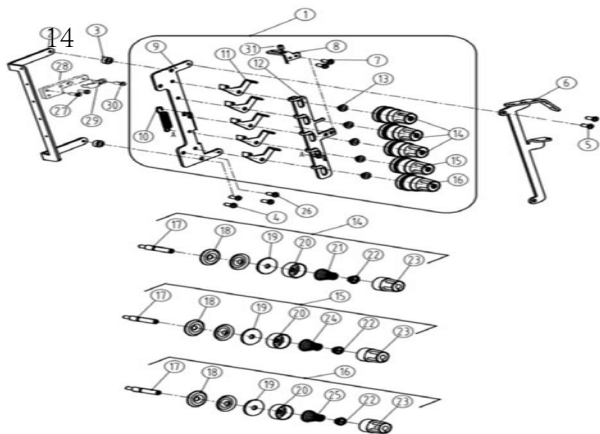
序号 Ref. No	公司件号 Part No	参考件号 Ref. Part. no	名称	Description	数量 Number
1	(310S30002)	253000-91	调压螺杆	adjusting bar	1
2	(301S16005)	253003	调压母	nut	1
3	30127006	240252	调压簧	spring	1
4	30127008	240253	压脚轴小弹簧	spring	1
5	30102020	253026	压脚轴	presser bar	1
6	30104017	206139	压脚轧头	presser bar clamp	1
7	301S11009		螺钉M4×12	screw	1
8	3010901700	253005-91	导块销簧组件	guide	1
9	S11025	7025	螺钉M4×20	screw	2
10	S01006	7009	螺钉M3×4.5	screw	1
11	3010206400	283008-91	拍压轴	lever	1
12	30108006	192024	挡圈	collar	1
13	301S12001	5084	曲柄螺钉	screw	1
14	30112016	206157	压脚轧头连接板	link	1
15	301S20007	5386	螺钉	screw	2
16	30127009	253010	拍压轴簧	spring	1
17	301S12001	206156	曲柄螺钉	collar	2
18	30122023		油封	plug	1
19	30104019	206149	拍压曲柄I	bell crank(upper)	1
20	301S11011	5187	拍压曲柄螺钉	screw	1
21	30212018	253027	拍压曲柄连接板	link	1
22	301S20008	5184	连接板螺钉	screw	2
23	30104020	206148	拍压曲柄II	bell crank(lower)	1
24	301S20013	002022-4	拍压曲柄II固定螺钉	screw	1
25	31002006		拍压轴	shaft	1
26	31112022		压脚扳手	lever	1
27	S01011		螺钉	screw	1
28	31012032		K4-3106钢丝绳压板	screw	1
29	31012072		K4-3126钢丝绳拉板	link	1
30	31012110		K4-1148压脚限位板	link	1
31	207s11007		螺钉	screw	2
32	30119020		线剪剃刀		
33	(30131018)		链条	screw	1
34	O01006	240095	O型圈8.5×1.8	o ring	1
35	3100201000		K4-1125调压螺杆组件	adjusting bar assembly	1
36	30722004		JK-8670-1106橡皮塞	oil guard.	1
37	30108005	253028	JK-8568-W11-22挡圈	finger guard	1

38	302S20014	4549	JK-8669UT-1601-22螺钉	screw	1
39	S01002		GB/T65-1985螺钉 M4×6.5	screw	2
40	3112200200		W4-3401拍压脚钢丝软轴(组 件)	screw	1
41	310S20014		K4-1150限位螺钉	screw	1
42	S01016		螺钉 M5×17	pulling plate	1
43	N01004		螺母M5	clamp	1
44	31012091		K4-1138线卡	screw	1
45	S05003		螺钉 M5×10 8.8级 镀白	Support plate	1
46	31112005		W4-1201链条挡板	stator	1
47	207s11007	7017	螺钉 M4×7.8	screw	2
48	30112017		JK-8569-W11-14压脚护罩		1
49	20122038		O型圈		1



## 13、喂针部件(Needle feeding assemblies)

序号Ref.No	公司件号 Part No	参考件号 Part. no	Ref.	名称	Description	数量 Number
1	30117005	257565		喂针	spreader	1
2	30104022	254516		喂针架	lever/assy	1
3	S01005	7020		螺钉 M4×10	screw	1
4	S01017	7022		螺钉 M4×14	screw	1
5	30102023	254508		摆动轴	crankshaft	1
6	30208010	212039		喂针轴挡圈	collar	1
7	S10005	S071		挡圈螺钉M3×3	screw	2
8	20123021	202176		油线	oil wick	1
9	(30123008)	207925		摆动轴油孔毛毡	felt	2
10	(001008)	233020		O型圈 9×1.8	o ring	1
11	30105013	254506		喂针摆动连杆	crank	1
12	S10029	4547		螺钉 M6×0.75×5	screw	2
13	30126005	254507		喂针摆动销	block	1
14	30102024	254519		摆动连杆轴	shaft	1
15	30128015	206180		摆动连杆轴垫圈	washer	1
16	H05004	306671		挡圈12	ring	1
17	30110007	254501A		喂针凸轮	eccentric assy	1
18	S10002	4514		螺钉 M5×5	screw	2
19	400059	254511		喂针连杆	connection	1
20	30104024	254503		喂针摆动曲柄	crank	1
21	S05002	4534		螺钉 M6×0.75×15.2	screw	1
22	30126006	254504		连杆销	screw	1
23	30128032	240062		垫圈	washer	1
24	N01004	4805		螺母 M5	nut	1
25	30128018			垫圈	washer	1

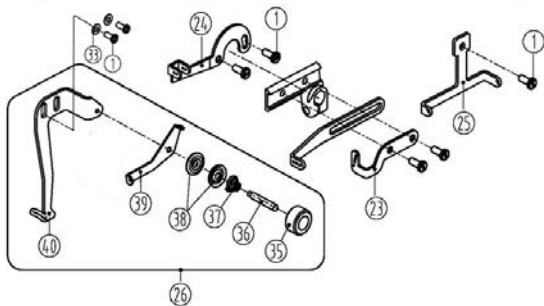
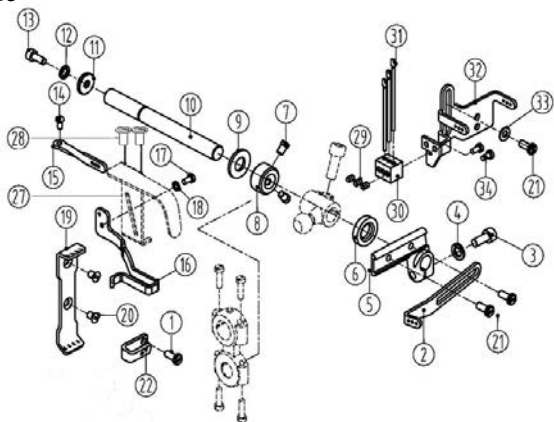




#### 十四、松线部件(Thread loosening assemblies)

序号Ref.No	公司件号 Part No	参考件号 Ref. Part. no	名称	Description	数量 Number
1	S101300800	20106B	夹线器	tension	1
2	3103010		松线架	Loose thread stand	1
3	131104001		拍压板线曲柄组件	block	2
4	207s11007		螺钉M4×7.8	screw	2
5	207s11011		螺钉M4×5.5	screw	2
6	S1013022		夹线器过线	Loose line board	1
7	S04020		螺钉M4×5.5	screw	2
8	31003005		轴套	Loose line board	1
9	131113001		钢丝支撑架	Loose line board	1
10	30127010		调节板簧	reset spring	1
11	30113007		二孔过线板	thread guide	5
12	31013008		松线板	Loose line board	1
13	30103041	206202	调节套	spacer	5
14	3011300800	254010A90	调线组件(弱)	tension spring assembly(heavy)	3
15	3011300900	254010B90	调线组件(中)	tension spring assembly	1
16	3011301600	254010C90	调线组件(强)	tension spring assembly(light)	1
17	301S30010	001817-2A	夹线延	screw stud	1
18	30128016	210319	夹线片	tension disc	2
19	30123029		松线夹线片垫	felt	1
20	30111005	208450-0A	调压止动量	cup	1
21	30127011	301037	调压簧(强)	spring(heavy)	3
22	30111006	20844B	调压止动塞	ratchet	1
23	301S16006	208447-0A	调压螺母	nut	1
24	30127012	201086	调压簧(中)	spring(media)	1
25	30127013	20106B	调压簧(弱)	spring(light)	1
26	207s11007		螺钉 M4×7.8	screw	2
27	30126007		松线曲柄定位梢	screw	1
28	S05005		螺钉M5×12	Plate	1
29	30104026		松线曲柄	Plate	1
30	W01010		平垫圈	screw	1
31	30502018		松线轴	Wirerope	1
32	30512034		连接板M5		1
33	13142004		转接板		1
34	423S20004		轴位螺钉		1
35	301S20030		螺钉		1
36	131404002		松线曲柄		1

15



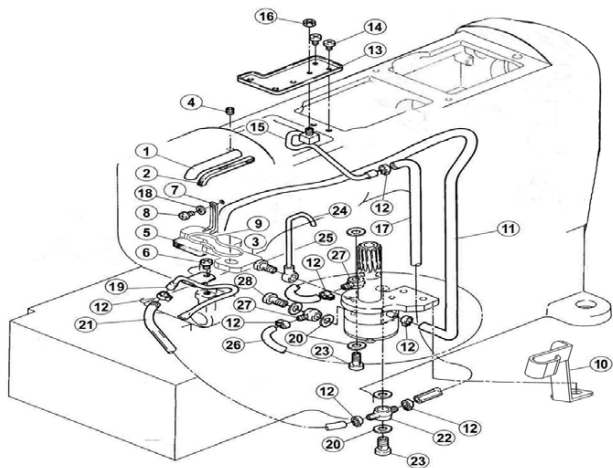
## 15、过线部件(Thread loosing assemblies)

序号 Ref. No	公司件号 Part No	参考件号 Ref. Part. no	名称	Description	数量 Number
1	S01001	7019	螺钉M4*7	screw	7
2	31013006	253505A	长过线板	thread take-up	1
3	S05004	4501	螺钉M5X14	screw	1
4	W02001	303067	垫圈	washer	1
5	30101018	253504	过线座	lever	1
6	20622019 (车壳部件已挂)		油封	plug	1
7	301S12001	5084	曲柄螺钉	screw	2
8	30108008	240201	过线座轴挡圈	ring	1
9	30128008		摆架轴垫圈	washer	1
10	31002001	253503	过线座轴(中轴)	shaft	1
11	30128019	204107	垫片	washer	1
12	W02002	201252	M4垫圈	washer	1
13	S05048	4527	螺钉M4X10	screw	1
14	311s05001	7009	螺钉M3X6	screw	1
15	31013017	253507	三孔过线	thread guide	1
16	31012022		护线罩	thread support	1
17	S01006		螺钉	screw	1
18	30128034		垫圈	washer	1
19	31013005		过线板	thread guide	1
20	206S30016	7170	螺钉	screw	2
21	207s11007	7018	螺钉M4*7.8	screw	3
22	31012045		U型夹线座	thread tension brackeat	1
23	31012018		过线板	thread guide	1
24	30112029	253514	喂针过线	thread guide	1
25	31013011	253515	过线板	thread guide	1
26	3011203200		喂针过线组件	thread guide	1
27	31112010		针杆护罩		1
28	S04010		螺钉M4×5.5		2
29	S10001	4535	螺钉M3×4	screw	3
30	30113012	253545	针杆过线座	holder	1
31	30113013	234521	过线杆	thread guide	3
32	30112027	253544	硅油合固定架	thread guide	1
33	W01001	303448	M4垫垫片	washer	3
34	S01006	7009	螺钉M3×4.5	screw	2
35	1311NS16002		自锁螺母	adjusting nut	1
37	30127016	137109	夹线簧	spring	1
38	20112033	137108	夹线片	thread retainer	2
39	30112032	253547	喂针二跟过线	thread guide	1
40	30112032	253548	喂针过线板	thread guide	1



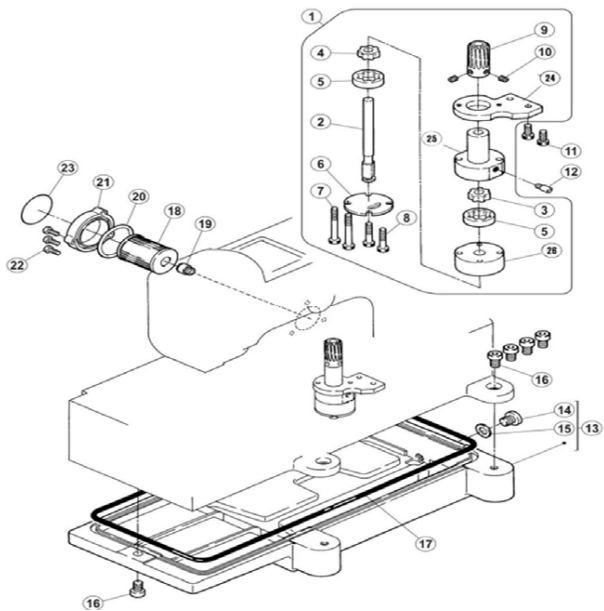
## 16、打线凸轮外移部件(Outside cam assemblies)

序号Ref.No	公司件号 Part No	参考件号 Ref. Part. no	名称	Description	数量 Number
1	30102063		打线凸轮轴	shaft	1
2	H03004		挡圈12	ring	1
3	B04045		轴承6001Z	bracket	2
4	H01011		孔用弹性挡圈	ring	1
5	30125004		小同步带轮1	small gear1	1
6	30122100		油封	plug	1
7	S10029		螺钉 M6×0.75×5	screw	1
	S12003		螺钉 M6×0.75×5		1
8	30135005		小同步带	small timing belt	1
9	S10007		螺钉 M5×5	screw	2
10	3010306300		打线凸轮组件	thread takeup	1
11	s10002		螺钉 M5×5	screw	2
12	H01016		挡圈21	ring	1
13	30103033		挡油套	oil baffle set	1
14	30112231		打线架	bracket	1
15	B06034		轴承 6801RS	bracket	1
16	30108011		挡圈	washer	1
17	30113045		过线	thread guide	1
18	S01001		螺钉 M4×7	screw	1
19	30113047		过线	thread guide	1
20	30213045		过线	thread guide	1
21	301S30055		调压螺钉	screw	1
22	10128001		毛毡垫	felt	1
23	12928036		小夹线垫片	thread guide disc	2
24	12927012		小夹线弹簧	pretension spring	1
25	302S16005		调压螺母	tension nut	1
26	L02001		螺钉 M4×8	screw	1
27	30112230		打线座	bracket	1
28	30127062		卡簧片	clamp	1
29	S04021		螺钉	screw	2
30	207S11020		螺钉 M3×4	screw	3
31	30112233		打线片	thread guide	1
32	30313019		过线片(左)	thread guide (left)	1
33	30313020		过线片(右)	thread guide (right)	1
34	W03007		垫圈	washer	1
35	301S20020		螺钉	screw	1
36	20128031		挡圈		1



## 17、润滑部件 (Lubrication assemblies)

序号Ref. No	公司件号 Part No	参考件号 Ref. Part. no	名称	Description	数量 Number
1	30121012	255003	铜油管	oil pipe	1
2	30123010	240136	油毡	felt	1
3	30223023		针杆回油毡	felt	1
4	S10002	4514	螺钉 M5×5	screw	1
5	30223023	255021	油毡	felt	1
6	207s11011		螺钉	screw	1
7	30127045	200136	回油毡卡簧	clamp	1
8	207S11007	255005	螺钉 M4×7.8	screw	1
9	30127060		毛毡卡簧		1
10	30112186		油管固定架	supporting	1
11	12921002	240135	维尼龙油管	tube	1
12	20429001	202199	油管卡簧	clamp	6
13	30112039	255006	接油盘	oil guard	1
14	S01002	7017	螺钉 M4×6.5	screw	2
15	3012101500	255007-91	喷油管组	oil distributor	1
16	N01001	4821	螺母 M4	nut	1
17	30121022	240134	Φ4×Φ6油管	tube	1
18	W01001	303448	垫圈 4	ring	1
19	30121009	255010-91	喷油管	oil distributor	1
20	20122033		垫片	washer	6
21	30121022	240134	Φ4×Φ6油管	tube	1
22	30136005	200136	油管接头	joint	1
23	301S30013	200152	过油螺钉	joint screw	2
24	30136003	255035-91	铜油管接头	pipe	1
25	301S30012	255037	油管螺钉	screw	1
26	30121022	240134	Φ4×Φ6油管	tube	1
27	30136005	200136	油管接头	joint	1
28	201S30004	200152	过油螺钉	joint screw	1
29	30129007		油管卡簧		1
30	20136007		油管接头塑料		2

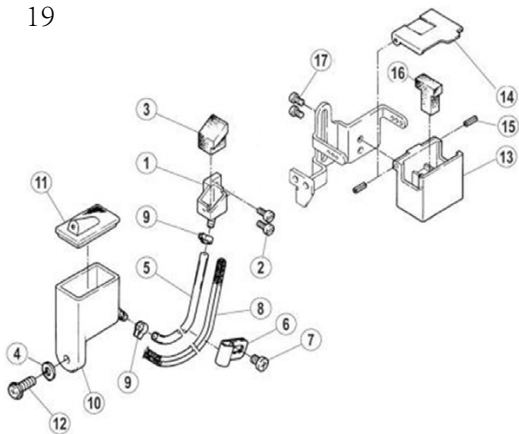




## 18、油泵部件(Oil pump assemblies)

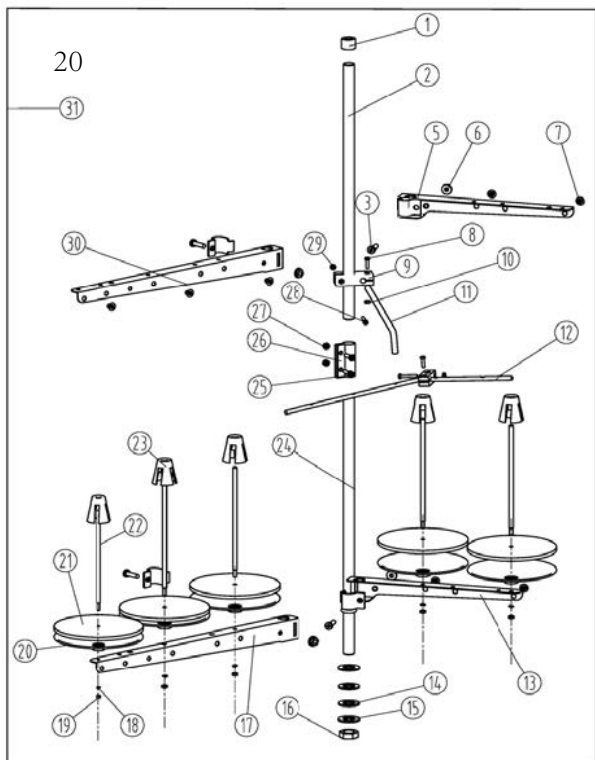
序号Ref.No	公司件号 Part No	参考件号 Ref. Part. no	名称	Description	数量 Number
1	3012000100	255040-91	油泵组件	oil pump assy	1
2	30102031	255024	油泵轴	shaft	1
3	30120004	255025	主动轮2	rotor	1
4	30120007	255026	主动轮1	rotor	1
5	30120005	255027	从动轮	rotor	2
6	30120008	255028	油泵盖	cover	1
7	(301S20011)	7105	油泵螺钉	screw	2
8	(S05006)	7026	螺钉 M4×25	screw	2
9	30125003	255019	油泵蜗轮	worm wheel	1
10	(S10002)	4514	螺钉 M5×5	screw	2
11	207s13009	4501	螺钉 M5×14	screw	2
12	301S30014		过油螺钉	joint screw	1
13	30101023	255000	油盘	oil reservoir	1
14	301S11015	5138B	堵油螺钉	screw	1
15	20528014	202287A	垫圈	washer	1
16	S05007	4504	螺钉 M8×20	screw	5
17	30122025	255001	油盘密封圈	o ring	1
18	20736004	206233	滤油器	filter element	1
19	201S30030	210200	滤油器接头	bracket/filter	1
20	001010	206431	O型圈 38.7×3.55	o ring	1
21	300140	210201-SD	滤油器盖	cover	1
22	207s11008	7021	螺钉 M4×12	screw	3
23	30131004	9A3002	提示说明	filter seal	1
24	30120002		油泵固定板	fixed plank	1

19



## 19、硅油盒装置部件 (Silicon oil delice assemblies)

序号Ref. No	公司件号	Part No	参考件号 Ref. Part. no	名称	Description	数量 Number
1	30101027		255013	机针冷却器	needle cooler (lower)	1
2	S01027		7010	螺钉 M3×6	screw	2
3	30123012		255014	油棉	felt	1
4	W01001		303448	垫圈 4	washer	1
5	30121021		240117	Φ5×Φ7油管	tube	1
6	30127020		206115	油管压簧片	bracket	1
7	S01002		7019	螺钉 M4×6.5	screw	1
8	20123021		202175	油线	oil wick	1
9	20429001		202199	油管卡簧 (小)	clamp	2
10	30101026		255015	下硅油盒	silicone oil	1
11	30122026		255016	下硅油盒盖	cap	1
12	S01005		7020	螺钉 M4×10	screw	1
13	30111070		207066-UD	上硅油盒 (塑料)	silicone oil	1
14	30112040		207067-UD	硅油盒盖	cap	1
15	P03008		206781	销 2×6	pin	2
16	30123011		207068	硅油棉	felt	1
17	S16002		7009	螺钉 M3×4.5	screw	2

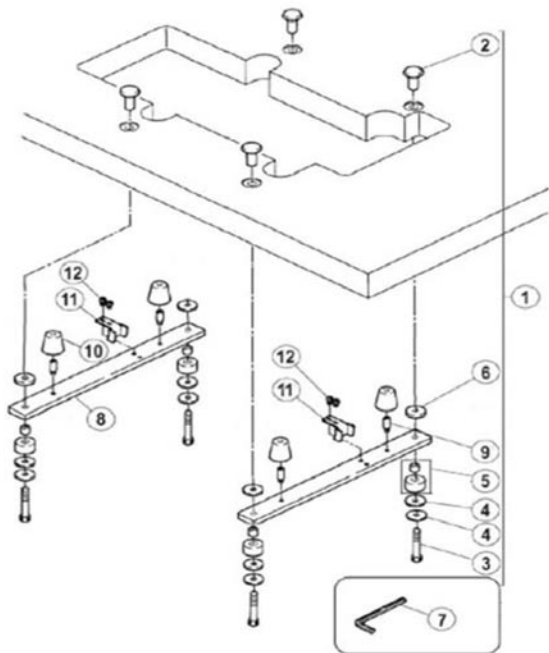


## 20、线架部件(Thread spool assemblies)

序号Ref. No	公司件号 Part No	参考件号 Ref. Part. no	名称	Description	数量 Number
1	20131019		棒帽	Rod Cap	1
2	21131008		上管	Upper thread column	1
3	20131020		导线环螺钉	Screw	4
5	21131009		导线架	Thread spool tray bracket	1
6	201S16006		导线环螺母	Thread guide hook nut	4
7	20131018		过线环	Thread guide hook	5
8	20131021		棒架螺钉	Screw	2
9	21131010		棒架	Clamp plate	1
10	201S16004		螺母	Nut	4
11	20131011		导线棒	Thread guide bar	1
12	30113019		过线棒	Thread guide	4
13	21131019		托线架	Thread spool tray bracket	1
14	20122049		防震垫	Plate dog link washer	2
15	20128025		下管垫圈	Lower washer	2
16	201S16005		螺母	Nut	1
17	21131017		托线架	Thread spool tray bracket	1
18	20128018		垫圈	Washer	5
19	201S16004		螺母	Nut	4
20	21131016		线盘	Spool tray	5
21	20131010		线盘垫	Spool tray cushioning	5
22	20131006		线托棒	Spool pin	5
23	21131015		线圈定位套	Spool Cushion	5
24	31131018		托线架	Thread spool tray bracket	1
25	S04050		螺钉 M5×15	Screw	2
26	21131014		套	Bushing	1
27	N01030		套螺母	Nut	2
28	20131022		棒架螺钉	Screw	2
29	201S16004		螺母	Nut	4
30	21131012		导线架	Threadspooltray bracket	1
31	2113101900		线架组件	Thread stand component	1

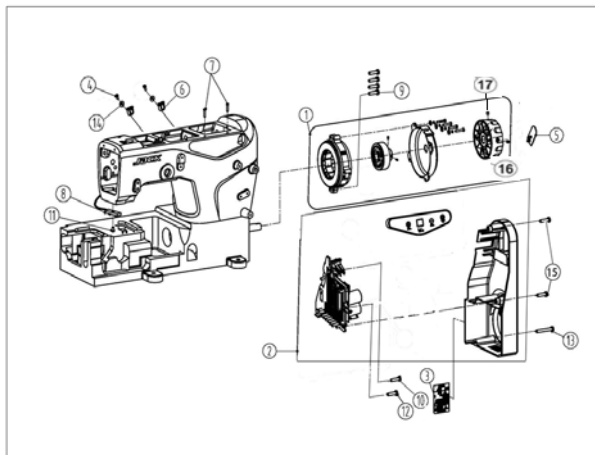
## 台板部件 (放在附件内)

machine table mechanism (put in accessory)



## 21、油盘托板部件(Oil plate assemblies)

序号 Ref.No	公司件号 No	Part	参考件号 Ref. Part. no	名称	Description	数量 Number
1	3010103200		9048	安装螺钉 (一套)	screw(set)	1
2	20131028		206336	托盘固定螺母	nut	4
3	20131027		4512	托板内六角螺钉	bolt	4
4	20131029		206337	大垫圈	washer	8
5	20131030		205764	防振套	rubber cushion	4
6	30122031		205467	减震垫圈	spacer	4
7	20131056		272	内六角扳手 (5mm)	allen key driver/5mm	1
8	30112198		259000	油盘托板	rest board	2
9	301S30018		7093	螺钉	screw	4
10	30122029		206338	油盘减振垫	rubber cushion	4
11	30112041		206329	链条挡板	treadle chain guide	2
12	S01011		7027	螺钉 M5×10	screw	4

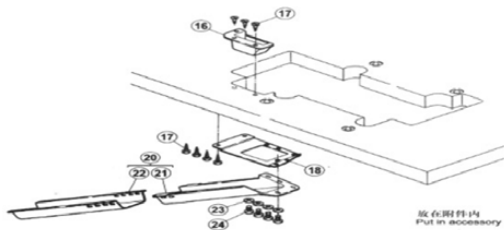
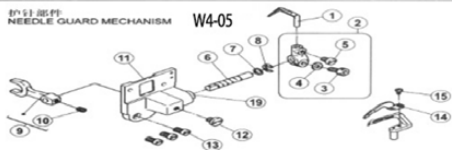




## 22、电控专用件(specific parts)

序号	公司件号 Part No	参考件号 Ref. Part. no	名称	Description	数量 Number
1	3113300200		霍尔伺服电机	electrical machine	1
2	3113000400		电控组件	electrically controlled	1
3	20131063		警示牌	washer	1
4	S01005		螺钉M5×5.5	screw	2
5	21111018		塑料logo	logo	1
6	20711210		线夹	clip	2
7	310s17001		螺钉	screw	2
8	1311300100		LED灯	LED light	1
9	S05068		螺钉M5×10	screw	4
10	S05003		螺钉M5×10	screw	1
11	s05190		螺钉M3x6	screw	1
12	S05003		螺钉M5×35	screw	1
13	S05003		螺钉M5×35	screw	1
14	W01001		垫片	washer	2
15	s05068		螺钉 M5×20		2
16	930000071		手轮		1
17	S10035		手轮螺钉		2

护针部件  
NEEDLE GUARD MECHANISM W4-05

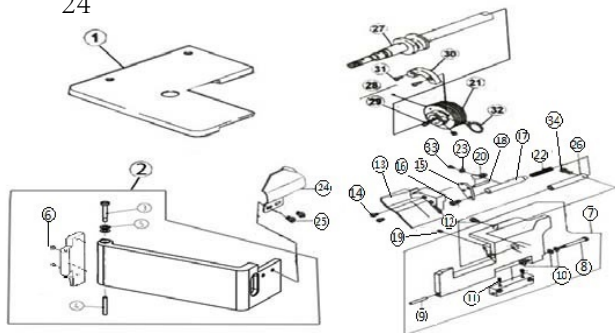


放在附件内  
Put in accessory

## 23、05专用部件(05 specific parts)

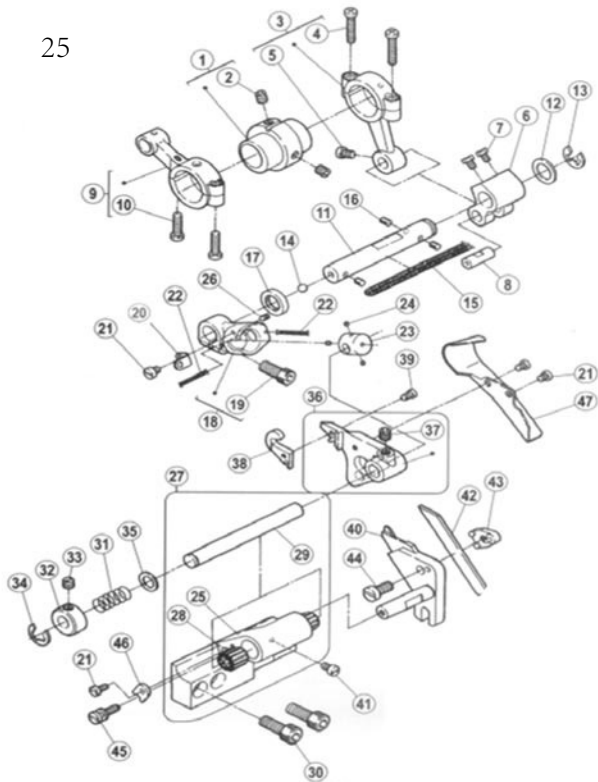
序号Ref. No	公司件号 Part No	参考件号 Ref. Part. no	名称	Description	数量 Number
1	30117002	357551B	后护针挡	needle guard(rear)	1
2	30117007	251505-92	护针挡架组件	lever assy	1
3	S05003	4500	螺钉 M5×10	bolt	1
4	W02001	303067	垫圈5	washer	1
5	S01002	7017	螺钉 M4×6.5	screw	1
6	30102037	251503	护针轴	shaft	1
7	W01021		垫片	washer	1
8	H05013	202522	挡圈6	ring	1
9	400064	251504	叉架	lever	1
10	S10002	4514	螺钉 M5×5	screw	1
11	30101036	251500-91	护针轴座	bracket	1
12	301S11016	7081	螺钉	screw	1
13	207s11007	7019	螺钉 M4×7.8	screw	3
14	30117003		前护针挡	needle guard(front)	1
15	S01012		螺钉 M2.5×4	screw	1
16	30111013	306473-UA	挡料斗	waste chute top(C)	1
17	301S30019	4905	木螺钉	screw	7
18	30112048	306474A	托板	bracket	1
19	30103046		套筒	bushing	1
20	3011101400		排料筒座组件	waste chute assy	1
21	30111014	205468-UA	排料筒座	waste chute top(A)	1
22	30111015	205469-UA	排料筒	waste chute top(B)	1
23	30128036		垫片	washer	1
24	S01005	7020	螺钉 M4×10	screw	4

24



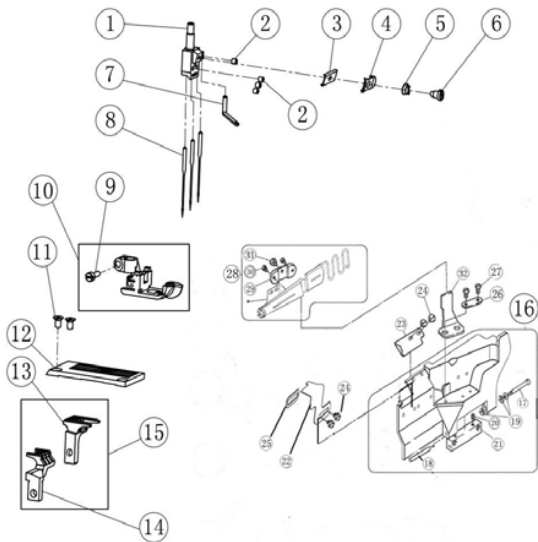
## 24、05专用部件(05 specific parts)

1	300953		JK-8568-W05-25-1左缝台盖(喷漆)	1
2	304425		W4-0309侧缝台组件05(喷漆)	1
3	301S20004		侧盖合扇销钉	1
4	301S20005		销螺钉	1
5	30128002		弹簧垫片	2
6	S10001		螺钉 M3×4(进口)	2
7	930000119		前罩缝台(喷漆)	1
8	301S11041		前罩缝台座螺钉	1
9	31126002		前罩缝台座销	1
10	30128002		弹簧垫圈	3
11	S10006		螺钉 M5×6	2
12	30122015		前罩防振垫	1
13	131103001		前挡板	1
14	S01001		螺钉 M4×7	4
15	30112046		定位板	1
16	S01011		螺钉 M5×10	1
17	30102110		前挡板轴	1
18	30126010		平行销	1
19	S01002		螺钉M5×5	1
20	30112160		挡板	1
21	3012400300		油封轴承	1
22	11727007		弹簧	1
23	W01002		M3垫片	1
24	30112044		左挡板	1
25	301S11020		压带轴螺钉	2
26	30103160		套筒	1
27	400068		主轴	1
28	30103003		前轴套	1
29	S10006		螺钉M5×6	2
30	30109002		下轴平衡块	1
31	S01009		螺钉M3×7.5	3
32	O01001		O型圈15×2.65	1
33	S01009		螺钉M3×7.5	1
34	S10026		螺钉M3×3	1



## 25、05专用部件 (05 specific parts)

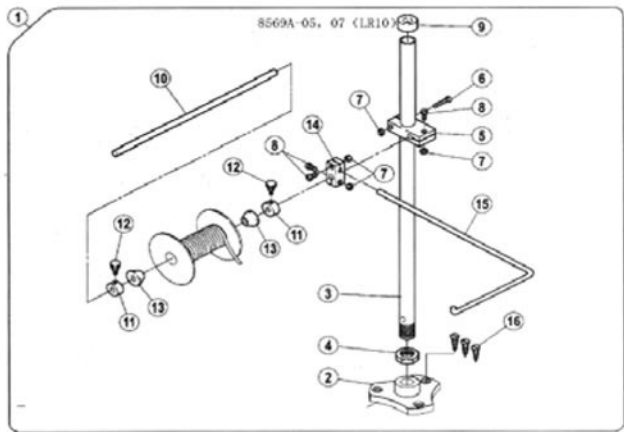
序号Ref. No	公司件号 Part No	参考件号 Ref. Part. no	名称	Description	数量 Number
1	30110009	255500	凸轮	eccentric assy	1
2	S10006	4539	螺钉 M5×6	screw	2
3	400062		连杆组件	eccentric assy	1
4	S01008		螺钉 M3.5×13	screw	4
5	S01010		螺钉 M4×8	screw	1
6	30104007		弯针曲柄	crank	1
7	301S12001		螺钉	screw	2
8	30126003		曲柄销	pin	1
9	400063		弯针摆动连杆	connection assy	1
10	S01008		螺钉 M3.5×13	screw	2
11	30102038	255502	曲柄轴	shaft	1
12	30128008	240102	护针轴垫圈	washer	1
13	H05001		垫圈10	ring	1
15	30123014		油线	oil wick	1
16	30123002		毛毡	felt	3
17	30122019		油封	oil seal	1
18	30104028	255503	摆轴曲柄	lever assy	1
19	S05004		螺钉 M5×14	screw	1
21	S01006	7009	螺钉 M3×4.5	screw	4
22	30123014		油线	oil wick	2
23	30102039	255505	摆轴	shaft	1
24	30123002		毛毡	felt	3
25	30101040		刀座	bracket assy	1
26	S12002		螺钉 M3×4	screw	1
27	3010104000		刀座组件	bracket assy	1
28	30103085		刀座套筒	needle bearing	2
29	30102040	255508-2	下刀座轴	shaft	1
30	305S13004		螺钉 M6×16.3	screw	2
31	30127022	306105	弹簧	spring	1
32	30108006	192024	挡圈	ring	1
33	209S14008	W00024-1	螺钉	screw	1
34	H05013	202522	挡圈	ring	1
35	30128026	207045	垫片	washer	1
36	30101037	255507-91	上刀架	upper knife holder	1
37	S12003	4547	螺钉 M6×0.75×5	screw	1
38	30119001	306394	上刀	upper knife	1
39	301S11017	5109	上刀固定螺钉	screw	1
40	30101039	255509	下刀架	lower knife holder	1
41	s10007		螺钉	screw	1
42	20619004	204161	下刀	lower knife	1
43	30101038	255510	下刀挡板	lower knife clamp	1
44	S01011	7028	螺钉 M5×10	screw	1
45	301S30021	255513	调节螺钉	screw	1
46	30112051	255511	挡片	guide	1
47	30112050	255515	除削板	chip guard	1





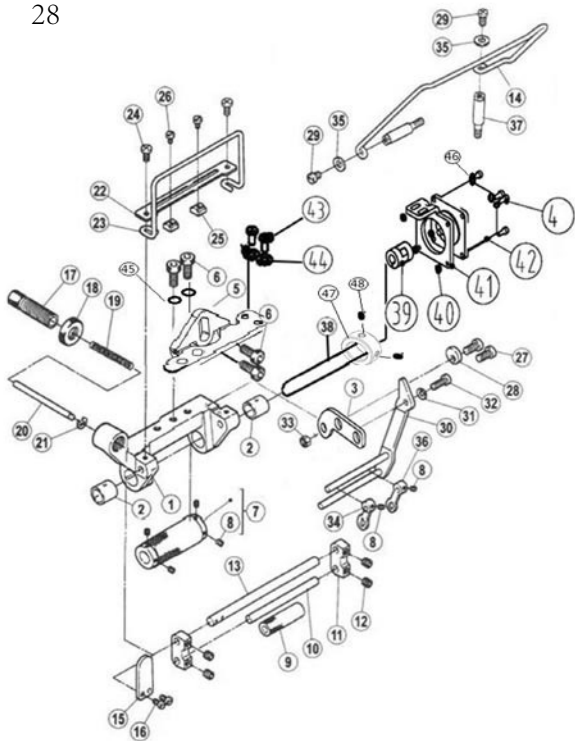
## 26、 针位组部件( specific parts)

序号Ref. No	公司件号 Part No	参考件号 Ref. Part. no	名称	Description	数量 Number
1	30134001		356针舌	needle holder	1
	30134002		364针舌	needle holder	1
2	S10026	4554	螺钉M3X3	screw	4
3	30112025	234561	夹线板	thread guide	1
4	30112026	253593	压线板	tension disc	1
5	30127014	253517	调压簧	spring	1
6	301S20009	OW09070-2	调线螺钉	screw	1
7	30112033	253511	喂线小过线	thread guide	1
8	30117001		机针	sponge	3
9	301S11010	1170-3	压脚固定螺钉	screw	1
10	3011601300		压脚(01GB)	presser foot assy (01GB)	1
	30116005		压脚(02BB*356)	presser foot assy (02BB*356)	1
	30116006		压脚(02BB*364)	presser foot assy (02BB*364)	1
11	302S17001		螺钉(进口)	screw	2
12	30115067		356针板(01GB)	needle plate(01GB*356)	1
	30115068		364针板(01GB)	needle plate(01GB*364)	1
	30115006		356针板(02BB)	needle plate(02BB*356)	1
	30115007		364针板(02BB)	needle plate(02BB*364)	1
13	30214001		送布牙(01GB)	main feed dog(01GB)	1
14	30214002		差动牙(01GB)	diff feed dog(01GB)	1
15	3021400100		送布差动牙组件(01GB)	main feed dog and diff feed dog(01GB)	1
	30214008		送布牙(02BB)	main feed dog(02BB)	1
	30214009		差动牙(02BB)	diff feed dog(02BB)	1
16	303796	250033-SD	前罩缝台座组件	front cover	1
17	301S20002	250013	前罩缝台座螺钉	screw	1
18	31126002		前罩缝台座销	screw	1
19	30128002	201191	弹簧垫圈	spring	3
20	S10002		螺钉 M5×5	screw	2
21	30101063	250012	前罩缝台座	bracket	1
22	30112060		前缝台挡板	screw	1
23	30112061	206601A	缝料挡板	fabric guard	1
24	S01065	7079	螺钉 M5×6	screw	4
25	31112011		挡板垫片	auxiliary plate/front	1
26	30112063	206460	龙头架垫	washer	1
27	S01011	7028	螺钉 M5×10	screw	2
28	3011206800		龙头组件	bracket assy	1
29	30109019	201913	龙头固定板	bracket	1
30	301S30051	5113	螺钉	screw	2
31	L02009		螺栓 M6×10	bolt	1
32	30112062	201914	龙头架	bracket	1



## 27、05、07专用部件 (05、07 specific parts)

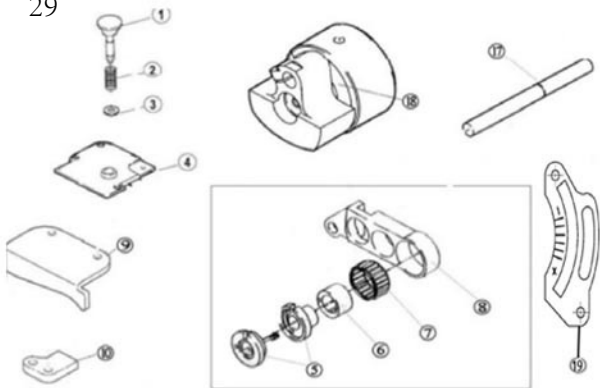
序号Ref.No	公司件号	Part No	参考件号 Ref. Part. no	名称	Description	数量 Number
1	3010204100		306469A9S	带子组件	reel stand assy	1
2	30103047		306468-SA	支柱盘	bracket	1
3	30102042		306466-SA	支柱	rod	1
4	N02001			螺母SM3/4×16	nut	1
5	30111008		383-SA	棒架	bracket	1
6	S04003			螺钉 M4×25	screw	1
7	N01005			螺母 M4	nut	4
8	S04004			螺钉 M4×15	screw	3
9	30122027		386	棒帽	rod cap	1
10	30102043		306464	带架直棒	shaft	1
11	30103048		306463	轴古	collar	2
12	S01068			螺钉 M4×8	screw	2
13	30103064		306462	轴锥架	reel guide	2
14	30111009		233-SA	固定器	bracket	1
15	30113020		306467	带架棒	rod	1
16	301S30022		4913	木螺钉	screw	3



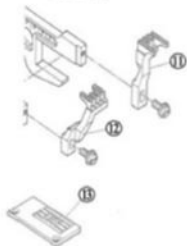
## 28、05专用部件 (05specific parts)

序号Ref. No	公司件号 Part No	参考件号 Ref. Part. no	名称	Description	数量 Number
1	300144		压带架座	bracket assy	1
2	30103055		套筒	bushing	2
3	31112017		W4-3004夹带连接板	bracket	1
4	S05048		螺钉M4X10		4
5	31112028		压带架支座	bracket	1
6	305S13004		螺钉	screw	4
7	3010305700		压带轮组件	roller assy	1
8	S10005		螺钉 M3×3	screw	6
9	30103059		压带轮II	rooler	1
10	30102045		夹带短轴	shaft	1
11	30109018	255502	夹带轴架	bracket	2
12	S10002	240102	螺钉 M5×5	screw	4
13	30102046		夹带长轴	shaft	1
14	30113021		带子架	lace guide	1
15	30112059		手柄	lever	1
16	S01027		螺钉 M3×5	screw	2
17	301S30027		调节螺钉	screw	1
18	301S16011	255503	调节螺母	nut	1
19	30127024		弹簧	spring	1
20	30126013	255504	销轴	shaft	1
21	H05002	7009	挡圈5	ring	1
22	30112055		压带板	guide	1
23	30113022	255505	压带架	lace guide	1
24	S01002		螺钉 M4×6.5	screw	2
25	301S16010		位置挡块	guide	2
26	301S11018		螺钉	screw	2
27	S01004		螺钉 M4×7.8	screw	1
28	30128028		偏心垫	stopper	1
29	S01004	255508-2	螺钉 M4×7.8	screw	2
30	3011205600		夹带架组件	bracket assy	1
31	30128020	306105	垫片	spring	1
32	S05048	192024	螺钉 M4×10	screw	1
33	N01001	W00024-1	螺母 M4	nut	1
34	30105017	202522	夹带连杆 I	lace guide	1
35	W01004	207045	垫圈5	washer	2
36	30105018	255507-91	夹带连杆II	lace guide	1
37	301S30025	4547	台螺钉	screw	2
38	31102003		W4-3001滚轮轴		1
39	31103002		W4-3010弹性联轴器		1
40	N01001		螺母 M4		4
41	31112016		W4-3003电机安装座		1
42	3113300300		W4-3012脚踏步进电机		1
43	S05005		螺钉		2
44	W02001		垫圈	spring	2
45	W02004		垫圈	spring	2
46	W02002		垫圈	spring	4
47	30208010		挡圈	guide	1

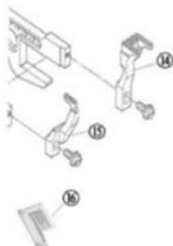
29



23GB (L)

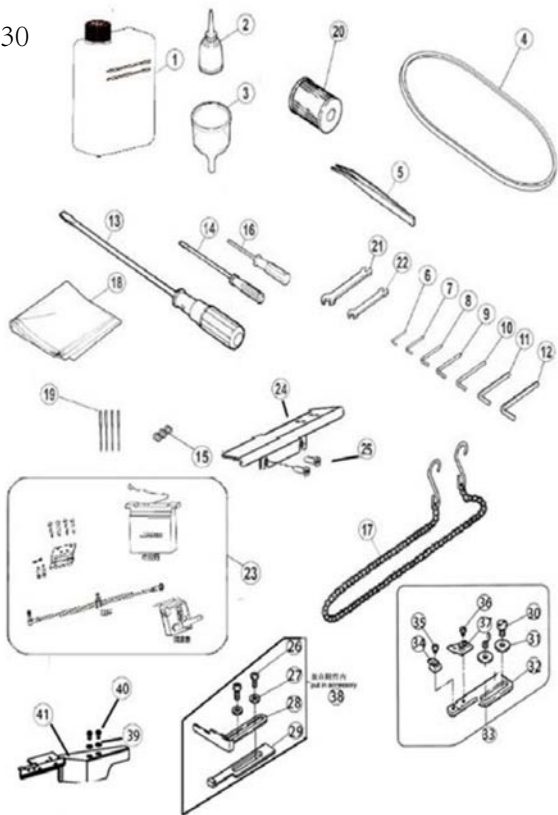


23BB (L)



## 29、23专用部件(23 specific parts)

序号 Ref.No	公司件号 Part No	参考件号 Ref. Part. no	名称	Description	数量 Number
1	30126016		针距调节按钮	pin	1
2	30127026		针距调节簧	spring	1
3	12928008		平垫圈	washer	1
4	30101162		下节左盖	cover	1
5	3010308900		调节器套组(大针距)	eccentric retainer	1
	30103150		送布调节器	regulator	1
6	30103100		偏心轴承套(大针距)	eccentric	1
7	B07043		轴承19×23×10	needle bearing	1
8	30104060		差动送布架(大针距)	Link/main feed	1
9	30109025		左挡板	guide (left)	1
10	30109026		挡板	guide (lower)	1
11	30114028		送布牙 (356/364)	main feed dog	1
12	30114029		差动牙 (356/364)	differntial feed dog	1
13	30115041		23GB针板 (356)	needle plate	1
	30115042		23GB针板 (364)	needle plate	1
14	30114030		送布牙 (356/364)	main feed dog	1
15	30114031		差动牙 (356/364)	differntial feed dog	1
16	30115045		2302BB针板 (356)	needle plate	1
	30115046		2302BB针板 (364)	needle plate	1
17	30102051		摆轴	shaft	1
18	31104002		针杆曲柄	motion assy	1
19	30112220		调节板		1





## 30、附件部件 (Accessories assemblies)

序号Ref. No	公司件号 Part No	参考件号 Ref. Part. no	名称	Description	数量Number
1	20131037		油壶 (大)	oil container	1
2	20131038		小油壶 (尖嘴)	oil container	1
3	20131039		漏斗	oil funnel	1
4	30135004		皮带	leather belt	1
5	20131051		镊子	tweezers	1
6	30131007		内六角扳手	allen key driver/1.5mm	1
7	20131046		内六角扳手	allen key driver/2mm	1
8	30131010		内六角扳手	allen key driver/2.5mm	1
9	30131012		内六角扳手	allen key driver/3mm	1
10	20131047		内六角扳手	allen key driver/4mm	1
11	20131056		内六角扳手	allen key driver/5mm	1
12	30131026		内六角扳手	allen key driver/6mm	1
13	20731047		螺丝刀 (大)	screwdriver (large)	1
14	10131004		螺丝刀 (小)	screwdriver (small)	1
15	S10005		螺钉 M3×3	screw	3
16	20131044		内六角扳手	allen key driver/1.5mm	1
17	30131018		链条	chain	1
18	10131005		机头罩	dust cover	1
19	30117001		机针	needle	4
20	20136001		滤油器	filter element	1
21	30131005		扳手 (6mm~7mm)	wrench/(6mm~7mm)	1
22	30131006		扳手 (8mm~10mm)	wrench/(8mm~10mm)	1
23	3013001100		直驱控制器	DI Special Part	1
24	304120		加宽前门板组件		1
25	S01011		螺钉M5×10		2
26	301S11024		滑块导座螺钉	screw	2
27	W01001		垫圈4	washer	2
28	30112065		缝料挡板1	fabric guide	1
29	30112066		缝料挡板2	fabric guide	1
30	S01011		螺钉 M5×10	screw	2
31	W01009		垫圈5	washer	2
32	30112035		盖缝附件2	bracket	1
33			03附件		1
34	30109020		盖缝附件1	fabric guide	1

## 工业缝纫机安全使用注意事项：

1. 必须遵守基本措施；
2. 必须经过专业培训，对缝纫机设备性能有所了解；
3. 使用前应检查所有安全装置；
4. 在安装机针、更换机针、压脚、针板、送布牙、弯针、旋梭或修理时，应立即关闭电源；
5. 离开缝纫机或工作场所时应关闭电源；
6. 使用离合马达时，要等待马达完全停止后再进行；
7. 缝纫机及附属装置使用的机油，润滑油等液体流入眼睛或沾到皮肤上应立即清洗；
8. 禁止用手触摸缝纫机电时的零件或装置；
9. 有关工业用平缝机与包缝机的修理、改造、主要机构的调整由专门技术人员来进行；
10. 一般的维修保养由专人进行；
11. 在电气方面的修理应在电气技术员的监督和指导下进行；
12. 缝纫机使用期间应定期清扫；
13. 为了正常安全运转，应安装地线，同时应在不受高频焊接机等强噪声源影响的环境下使用；
14. 电源插头应由专人安装；
15. 工业用平缝机、包缝机在指定用途以外不能使用。

## 环保要求：

- 1、使用过程中产生的废油及其他废弃物请根据当地环保的要求进行合理的处置。
- 2、请在使用完后及时关闭电源，减少电能的消耗。
- 3、请在说明书要求的电压及环境下使用，已延长产品的使用寿命，减少废弃物的产生。
- 4、机器报废后请勿将本机器及其附件作为普通的生活垃圾处理。请遵守本设备及其附件处理的本地法令，并支持回收行动。

## Notes for safe use of industrial sewing machines:


1. Basic measures must be observed.
2. Pass the specialized training and master sewing machine equipment performance.
3. All safety devices should be checked before use.
4. When installing needle, and changing needle, presser foot, plate, feed dog, bent needle, hook or repairing, the power supply should be turned off immediately.
5. Power should be turned off when leaving the sewing machine or workplace.
6. When using the clutch motor, please wait until the motor stops completely.
7. The machine oil and other liquids used in sewing machines and ancillary devices should be cleaned immediately when they are put into eyes or touch skin.
8. Do not touch the parts or devices when the machine is powered by hand.
9. The repair, renovation and adjustment of the main mechanisms of the relevant industrial sewing machines and overseers shall be carried out by specialized technicians.
10. General maintenance is carried out by specially-assigned persons.
11. Electrical repairs should be performed under the supervision and direction of the electrical technician.
12. The machine should be cleaned regularly during operation.
13. In order to operate normally and safely, ground lines should be installed, and they should be used in an environment free from strong noise sources such as high frequency welding machine.
14. Power plug should be installed by specially-assigned person.
15. Industrial lockstitch sewing machine and overlock sewing machine can not be used except the designated use.



## Environmental requirements:

- 1、 Please dispose the waste oil and other waste products properly according to local environmental protection requirements.
- 2、 Please turn off the power after use to reduce power consumption.
- 3、 Please use under the voltage and environment required in the manual to extend the service life of the product and reduce waste generation.
- 4、 Do not treat the machine and its accessories as ordinary household garbage after being scrapped. Please comply with local laws governing the disposal of the equipment and its accessories and support recycling operations.

# W4-D-05 步进电机控制器说明书

## 1. 步进电机转速设置

在空闲界面（开机后显示的界面）且主轴电机停止运行，长按  键 3s 将进入步进电机转速设置

界面，按  键数码管显示的值增加，步进电机转速增大，按  键数码管显示的值减小，步进电机转

速减小，修改完参数后短按  键保存参数，并退出到空闲界面。

## 2. 错误代码说明表

序号	内容	对策
E0	主轴电机控制器与步进电机控制器通信异常	请检查通信连接线是否松动或脱落； 请尝试将电源重启； 上述如仍无法解决请联系当地服务商或拨打 4008876858。
E1	步进电机控制器过流	请尝试将电源重启； 上述如仍无法解决请联系当地服务商或拨打 4008876858。
E2	步进电机控制器驱动电压过高	请尝试将电源重启； 上述如仍无法解决请联系当地服务商或拨打 4008876858。

## 3. 控制器结构及接口

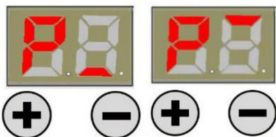


# 绷缝 W4-D 电控箱操作说明书

## Instructions of W4-D Interlock sewing machine panel operation

本控制器使用双位数码管显示实现参数调整。在 P 主界面，第一个数码管显示“P”，第二个数码管显示当前设定的停针位置，上、下停针如图所示（图 1）。

In P interface, the first tube display “P”, the second tube display shows the current needle position, picture 1 shows the upper and lower needle position.



### 1. 转速的修改 Modify speed

在待机 P 界面按+键或者-键，显示当前转速，按+键速度递增 100RPM（数值递增 1），按-键速度递减 100RPM（数值递减 1），长按+键（-键）可实现快速递增（递减），停止按+键或者-键后约 3 秒，自动保存设定的速度参数，并回退到 P 界面。

The panel shows “P”. Then press + or - to adjust speed up and down, short-press + or - to adjust speed up 100RPM and down 100RPM, long-press + (-) speed rapidly up (down). After 3 seconds, the parameter saved and the panel back to the “P”.

### 2. 停针位修改 Needle Position Adjust

在 P 界面下，长按+键约 3 秒不松开，可以调节上下停针位。

The panel shows “P”, press + for 3 seconds, then set the position up or down.

序号 NO.	参数定义 parameter	范围 range	默认值 Default	参数说明 Description
在 P 界面，长按+和一组合键 3s，可进入技术员界面，并显示 F The panel shows “P”, press + and — for 3 seconds, inter engineers interface, and it shows “F”				
K	机头灯亮度调节 LED light adjustment	0 - 3	2	0: 灭 off 1~3: 亮度 1~3 level 1~3
L	缝纫限制速 Limited sewing speed	05 - 55	50	以 500rpm 为单位递减 Decline by 500rpm every time
M	停针位开关 Switch of needle position	0 - 1	1	0: 关闭 off 1: 开启 on
H	休眠时间 Dormancy time	0 - 6	3	0: 关闭 off unit: 10min
V	速度显示使能 Speed display	0 - 1	0	0: 关闭 off 1: 开启 on

在 F 界面，长按一键 3s，进入监控参数，并显示 J The panel shows "P", press — for 3 seconds, inter monitoring parameter, and it shows "J"		
J1	实时速度 Real-time Speed	显示的数×100=实际速度 the showing number multiples by 100 equal to the real speed.
J2	实时功率 Real-time Power	显示的数×10=实际功率 the showing number multiples by 10 equal to the real power.
J3	输入电压 Input Voltage	显示的数×10=实际电压 the showing number multiples by 10 equal to the real voltage.
J4	历史电压 Historical Voltage	显示历史输入最低电压和最高电压 Display the historical lowest input voltage and highest input voltage.
J5	历史错误代码 Historical Error	显示最新的 5 个错误代码 Display historical error code(only show the latest 5 ).
J6	累计运行时间 Cumulative Running Time	显示的数×100=实际时间 ( Hour ) the showing number multiples by 10 equal to the real time(hour).

### 3.恢复出厂设置 Factory reset

在 P 界面，长按一键 3 秒，参数将恢复出厂设置。(J4、J5、J6 的监控数据除外)

### 4.操作参数说明表 Parameter description

The panel shows "P", press — for 3 seconds, the parameter will back to factory setting.

### 5.错误码说明表 Error code description

错误 Error code	内容 Reasons	对策 Solutions
E1	电机堵转 Motor stuck	请转动手轮检查机头是否卡住或者干涩转动困难； 请检查电机插件是否松动或者脱落；请检查加工物料是否过厚，电机因扭力不足而无法贯穿；请检查机器是否缺少润滑油。 The motor run out of load capacity, please reduce the load capacity for the motor and then restart the motor; Please check if the plug of motor loose or drop; Please check if the sewing material is too heavy; Please check if the machine needs lubrication.
E2	软件过流 software over-current	请关电后重新上电，如果不能消除报警，请检查： 电机负荷过大，请减轻负荷后重启电机； Motor used too much, Restart machine after several minutes, then please check if the fabric much too heavy.

E3	参数保存异常 Parameter save abnormal	出现此种状况，需要关闭电源，稍后再打开电源开关即可； 恢复出厂设置（长按一键约 3s 不松开）； 若重启或者恢复出厂设置后也不能解决，建议联系经销商解决。Restart machine after several minutes or reset machine (press 3s); If the problem unsolved, please contact dealers.
E4	电机霍尔信号异常 Hall of the motor with problem	请检查电机编码器插头连接是否可靠，编码器信号线是否有断线，插针是否退出或者变形。Please check if the 10core line connect well or not, please check if the connect line of hall is well or not.
E5	定位器信号异常 The synchronizer signal	请检查定位器是否连接电控；请检查上下定位信号是否正常。 Forget to insert the synchronizer cable before turn on the machine To check the both up needle position signal and the down needle position signal is working.
E6	调速器异常 Speed governor abnormal	请检查压脚机构是否回到正确位置，压脚安全开关是否损坏，插座是否正常。To check if the presser foot back to the correct position or not, to check if the safety switch button is damaged or not, the outlet is abnormal or not.
E7	电流检测电路故障 Current detection and circuit fault	请检查电路板是否干净清洁；请检测电源电压是否正常； 请等待电源重新开启/复位（请仔细检查电源板各项机能）。Please check whether the circuit board is clean; Please check whether the power voltage is normal; Please wait after restarting the power or reset (please carefully check each function of the power board).
EA	硬件过流 Hardware over-current	请关电后重新上电；请检查供电电压是否正常；请尝试恢复出厂设置。Please cut off the power and restart; Please check whether the supply voltage is normal; Please try to restore factory defaults.
Eb	系统过电压 System over-voltage	立即切断电源，并检查供电电压是否过高，如果是，请调整供电电压到额定电压后再开机工作（额定电压：220V）。Immediately cut off the power, and check whether the supply voltage is too high, if yes, please adjust the rated voltage, then start to work (rated voltage: 220V).
EC	系统欠电压 System under-voltage	请检查供电电压是否正常；请等待电源重新开启/复位（请仔细检查电源板各项机能）。Mean the voltage abnormal, please check if the voltage is normal or not; Means waiting for the power, and need to restart again or recover to the factory reset.

杰克缝纫机  
全球销量遥遥领先  
Leading in global sales

400-8876-858  
www.chinajack.com



JACK SEWING MACHINE CO.,LTD.

2019年10月版 Edition: October,2019

杰克缝纫机股份有限公司

中国浙江省台州市椒江区三甲东海大道东段10008号

电话 :0086-576-88177788 88177789

传真 :0086-576-88177758

产品标准代号 : Q/TK 007-2017

资料如有更改，恕不另行通知，以实样为准

JACK SEWING MACHINE CO.,LTD.

NO.1008.DONGHAI AVENUE EAST,JIAOJIANG DISTRICT,TAIZHOU CITY , ZHEJIANG

TEL: 0086-576-88177782 88177767 E-mail: sales@chinajack.com

FAX: 0086-576-88177787 www.chinajack.com

Standard code of the products:Q/TK 007-2017

You will be not informed if the file has been revised. Please set sample as standard.